

## Recombinant Dog PNLIPRP1 Protein (18-467 aa), His-tagged

Cat. No. PNLIPRP1-2495D Lot. No. (See product label)

### SPECIFICATION

<b>Product Overview</b>	Recombinant Dog PNLIPRP1 Protein (18-467 aa) is produced by Yeast expression system. This protein is fused with a 6xHis tag at the N-terminal. Research Area: Signal Transduction. Protein Description: Full Length of Mature Protein.
<b>Species</b>	Dog
<b>Source</b>	Yeast
<b>ProteinLength</b>	18-467 aa
<b>Description</b>	May function as inhibitor of dietary triglyceride digestion. Lacks detectable lipase activity towards triglycerides, diglycerides, phosphatidylcholine, galactolipids or cholesterol esters (in vitro).
<b>Form</b>	Tris-based buffer,50% glycerol
<b>Molecular Mass</b>	51.7 kDa
<b>AA Sequence</b>	KEVCYEQIGCFSDAEPWAGTAIRPLKVLWSPERIGTRFLLYTNKNPNNFQTLTPSD PSTIEASNFQTDKKTRFIIHGFIDKGEENWLLDMCKNMFKVEEVNVCICVDWKKGSQT SYTQAANNVRVGAQVAQMLSMLSANYSYSPSQVQLIGHSLGAHVAGEAGSRTPG LGRITGLDPVEASFQGTPEEVRLDPTDADFVDVIHTDAAPLIPFLGFGTSQQMGHLD FFPNGGEEMPGCKKNALSQIVDLDDGIWEGTRDFVACNHLRSYKYSESILNPDGFA SYPCASYRAFESNKCFCPCDQGCPQMGHYADKFAVKTSDETQKYFLNTGDSSNFA RWRYGVSITLSGKRATGQAKVALFGSKGNTHQFNIFKILKPGSTHSNEFDAKLDVG

 Tel: 1-631-559-9269 1-516-512-3133

 Email: [info@creative-biomart.com](mailto:info@creative-biomart.com)  Fax: 1-631-938-8127

 45-1 Ramsey Road, Shirley, NY 11967, USA

TIEKVKFLWNNNVNPTFPKVGAAKITVQKGEEKTVHSFCSESTVREDVLLTLTPC

**Purity** > 90% as determined by SDS-PAGE.

**Notes** Repeated freezing and thawing is not recommended. Store working aliquots at 4 centigrade for up to one week.

**Storage** The shelf life is related to many factors, storage state, buffer ingredients, storage temperature and the stability of the protein itself. Generally, the shelf life of liquid form is 6 months at -20 centigrade/-80 centigrade. The shelf life of lyophilized form is 12 months at -20 centigrade/-80 centigrade.

**Concentration** A hardcopy of COA will be sent along with the products. Please refer to it for detailed information.

## GENE INFORMATION

**Gene Name** [PNLIPRP1 pancreatic lipase-related protein 1 \[ Canis lupus familiaris \]](#)

**Official Symbol** [PNLIPRP1](#)

**Synonyms** PNLIPRP1; pancreatic lipase-related protein 1; PL-RP1; lipase; PLRP1;

**Gene ID** [404010](#)

**mRNA Refseq** [NM\\_001003319](#)

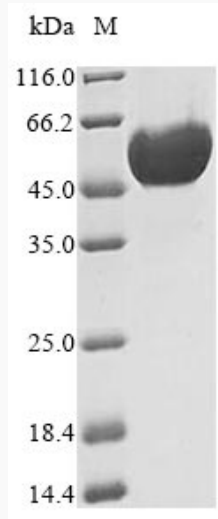
**Protein Refseq** [NP\\_001003319](#)

**UniProt ID** [P06857](#)

 Tel: 1-631-559-9269 1-516-512-3133

 Email: [info@creative-biomart.com](mailto:info@creative-biomart.com)  Fax: 1-631-938-8127

 45-1 Ramsey Road, Shirley, NY 11967, USA



(Tris-Glycine gel) Discontinuous SDS-PAGE (reduced) with 5% enrichment gel and 15% separation gel.

 Tel: 1-631-559-9269 1-516-512-3133

 Email: [info@creative-biomart.com](mailto:info@creative-biomart.com)  Fax: 1-631-938-8127

 45-1 Ramsey Road, Shirley, NY 11967, USA