

Recombinant Cat PNLIPRP1 Protein, His/Myc-tagged

Cat. No. PNLIPRP1-25C Lot. No. (See product label)

SPECIFICATION

Product Overview	Recombinant Cat PNLIPRP1 Protein, fused to His/Myc-tag, was expressed in E. coli.
Species	Cat
Source	E.coli
Description	Pancreatic lipase related protein 1
Form	Supplied as a 0.2 µm filtered solution in PBS, pH8.0.
Molecular Mass	~51.9 kDa
AA Sequence	<p>MGHHHHHHKEICFPRLGCFSDDAPWAGIAQRPLKILPWPPKDVNTRFLLYTNENPN NFEIIADESTIMSSNFNTDRKTRFIIHGFDKGEENWLSKICKNLFTVESVNCICVDWK SGSKTGYTQASQNI RIVGAEVAYFVEVLQSAFGYSPSNVHIIHSLGAHAAGEAGRRI NGTAGRITGLDPAEPCFEGTPDLVRLDPSDALFVDVIHTDAAPIIPNMGFGMSQTVG HLDFFPNGGKEMPGCQKNILSQIVDIDGIWEGTRDFVACNHLRSYKYYSDSILNPDG FAGFPCASYSVFSANKCFPCPSEGCPQMGHYADRFPGKTNGVQGIFYLNTGDATN FARWRYKVAVTLGRKVTGHVLTFLGNGKNSKQYEIFKGTLPDSTHSNEFDSDV DVGDLQKVKFIWYNRVINPTLPRVGASKIMVERNDGKVFNFCSQETVREDILLTLTPC EQKLISEEDL</p>
Purity	>90%
Storage	Store it under sterile conditions at -20 to -80 centigrade. It is recommended that the

 Tel: 1-631-559-9269 1-516-512-3133

 Email: info@creative-biomart.com  Fax: 1-631-938-8127

 45-1 Ramsey Road, Shirley, NY 11967, USA

protein be aliquoted for optimal storage. Avoid repeated freeze-thaw cycles.

Concentration 0.58mg/mL

GENE INFORMATION

Gene Name PNLIPRP1 pancreatic lipase related protein 1 [*Felis catus* (domestic cat)]

Official Symbol PNLIPRP1

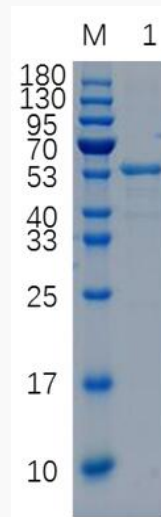
Gene ID 101083458

mRNA Refseq XM_006938208

Protein Refseq XP_006938270

UniProt ID A0A0A0MPX7

SDS-PAGE



Tel: 1-631-559-9269 1-516-512-3133

Email: info@creative-biomart.com Fax: 1-631-938-8127

45-1 Ramsey Road, Shirley, NY 11967, USA



12% reducing SDS-PAGE analysis of purified fPL (approximately 1 mg protein loaded).

 Tel: 1-631-559-9269 1-516-512-3133

 Email: info@creative-biomart.com  Fax: 1-631-938-8127

 45-1 Ramsey Road, Shirley, NY 11967, USA