

Recombinant Human PNLIPRP1 Protein, Myc/DDK-tagged, C13 and N15-labeled

Cat. No. PNLIPRP1-3700H Lot. No. (See product label)

SPECIFICATION

Product Overview	PNLIPRP1 MS Standard C13 and N15-labeled recombinant protein (NP_006220) with a C-terminal MYC/DDK tag, was expressed in HEK293 cells.
Species	Human
Source	HEK293
Description	PNLIPRP1 (Pancreatic Lipase Related Protein 1) is a Protein Coding gene. Diseases associated with PNLIPRP1 include Macular Degeneration, Age-Related, 10. Among its related pathways are Glycerolipid metabolism and Metabolism. Gene Ontology (GO) annotations related to this gene include calcium ion binding and triglyceride lipase activity. An important paralog of this gene is PNLIP.
Molecular Mass	51.8 kDa
AA Sequence	MLIFWTITLFLLLGAAKGKEVCYEDLGCFSDTEPWGGTAIRPLKILPWSPEKIGTRFLLY TNENPNNFQILLSDPSTIEASNFQMDRKTRFIIHGFIDKGDESWVTD MCKKLFEEVEE VNCICVDWKKGSQATYTTQAANNVRVVGQAQAQMLDILLTEYSYPPSKVHLIGHSLGA HVAGEAGSKTPGLSRITGLDPVEASFESTPEEVRLDPSDADFVDVIHTDAA PLIPFLG FGTNQQMGHLDFFPNGGESMPGCKKNALSQIVDL DGIWAGTRDFVACNHLRSYKY YLESILNPDGFAAYPCTSYKSFESDKCFPCPDQGCPQMGHYADKFAGRTSEEQQKF FLNTGEASN FARWRYGVSITLSGRTATGQIKVALFGNKG NTHQYSIFRGILKPGSTH SYEFDAKLDVGTIDKVKFLWNNNVINPTLPKVGATKITVQKGEEKTVYNFCSEDTVRE

 Tel: 1-631-559-9269 1-516-512-3133

 Email: info@creative-biomart.com  Fax: 1-631-938-8127

 45-1 Ramsey Road, Shirley, NY 11967, USA

DTLLTLPCTRTRPLeqKLISEEDLAANDILDYKDDDDKV

Purity > 80% as determined by SDS-PAGE and Coomassie blue staining

Stability Stable for 3 months from receipt of products under proper storage and handling conditions.

Storage Store at -80 centigrade. Avoid repeated freeze-thaw cycles.

Concentration 50 µg/mL as determined by BCA

Storage Buffer 100 mM glycine, 25 mM Tris-HCl, pH 7.3.

GENE INFORMATION

Gene Name [PNLIPRP1 pancreatic lipase-related protein 1 \[Homo sapiens \(human\) \]](#)

Official Symbol [PNLIPRP1](#)

Synonyms PNLIPRP1; pancreatic lipase-related protein 1; PLRP1; PL-RP1;

Gene ID [5407](#)

mRNA Refseq [NM_006229](#)

Protein Refseq [NP_006220](#)

MIM [604422](#)

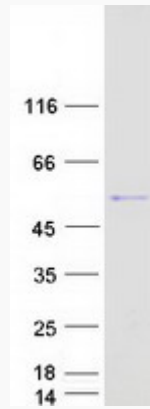
UniProt ID [P54315](#)

 Tel: 1-631-559-9269 1-516-512-3133

 Email: info@creative-biomart.com  Fax: 1-631-938-8127

 45-1 Ramsey Road, Shirley, NY 11967, USA

SDS-PAGE



 Tel: 1-631-559-9269 1-516-512-3133

 Email: info@creative-biomart.com  Fax: 1-631-938-8127

 45-1 Ramsey Road, Shirley, NY 11967, USA