

Recombinant Human PNLIPRP1 Protein (Lys18-Cys467), C-His tagged

Cat. No. PNLIPRP1-4944H Lot. No. (See product label)

SPECIFICATION

Product Overview	Recombinant human PNLIPRP1 (Lys18-Cys467) fused with the C-terminal His tag was expressed in Mammalian cells.
Species	Human
Source	Mammalian Cells
ProteinLength	Lys18-Cys467
Form	Lyophilized powder/frozen liquid
Molecular Mass	35.2 kDa
Purity	>90% as determined by SDS-PAGE.
Notes	For research use only.
Storage	Use a manual defrost freezer and avoid repeated freeze thaw cycles. Store at 2 to 8 centigrade for one week. Store at -20 to -80 centigrade for twelve months from the date of receipt.
Storage Buffer	Supplied as solution form in PBS or lyophilized from PBS.
Reconstitution	Reconstitute in sterile water for a stock solution.

 Tel: 1-631-559-9269 1-516-512-3133

 Email: info@creative-biomart.com  Fax: 1-631-938-8127

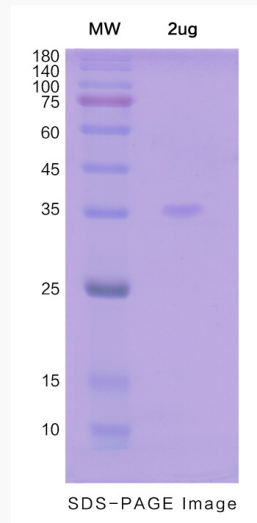
 45-1 Ramsey Road, Shirley, NY 11967, USA

Shipping

They are shipped out with dry ice/blue ice unless customers require otherwise.

GENE INFORMATION**Gene Name** PNLIPRP1 pancreatic lipase-related protein 1 [Homo sapiens (human)]**Official Symbol** PNLIPRP1**Synonyms** PNLIPRP1; pancreatic lipase-related protein 1; PLRP1; PL-RP1;**Gene ID** 5407**mRNA Refseq** NM_006229**Protein Refseq** NP_006220**MIM** 604422**UniProt ID** P54315 Tel: 1-631-559-9269 1-516-512-3133 Email: info@creative-biomart.com  Fax: 1-631-938-8127 45-1 Ramsey Road, Shirley, NY 11967, USA

SDS-PAGE



 Tel: 1-631-559-9269 1-516-512-3133

 Email: info@creative-biomart.com  Fax: 1-631-938-8127

 45-1 Ramsey Road, Shirley, NY 11967, USA