

Recombinant Human PNPLA2 Protein, His-SUMO-tagged

Cat. No. PNPLA2-1333H Lot. No. (See product label)

SPECIFICATION

Product Overview	Recombinant Human PNPLA2 Protein (1-504aa) was expressed in E. coli with N-terminal His-SUMO tag.
Species	Human
Source	E.coli
ProteinLength	1-504 a.a.
Form	Tris-based buffer, 50% glycerol.
Molecular Mass	71.3 kDa
AA Sequence	<p>MFPREKTWNISFAGCGFLGVYYVGVASCLREHAPFLVANATHIYGASAGALTATALV TGVCCLGEAGAKFIEVSKEARKRFLGPLHPSFNLVKIIRSFLKVLPADESHEHASGRLGI SLTRVSDGENVIISHFNSKDELIQANVCSGFIPVYCGLIPPSLQGVRVYVDGGISDNLPL YELKNTITVSPFSGESDIPCQDSSTNIHELVRTNTSIQFNLRNLYRLSKALFPPEPLVL REMCKQGYRDGLRFLQRNGLLNRPNPLLALPPARPHGPEKDKQAVESAQAEDYSQ LPGAEDHILEHLPARLNEALLEACVEPTDLLTTLNMLPVRLATAMMVPTLPLESALS FTIRLLEWLDPVPEDIRWMKEQTGSICQYLVMAKRLGRHLPSRLPEQVELRRVQS LPSVPLSCAAYREALPGWMRNLSLGDALAKWEECQRQLLLGLFCTNVAFPPEARL MRAPADPAPAPADPASPQHQLAGPAPLLSTPAPEARPVIGALGL</p>
Purity	Greater than 90% as determined by SDS-PAGE.

 Tel: 1-631-559-9269 1-516-512-3133

 Email: info@creative-biomart.com  Fax: 1-631-938-8127

 45-1 Ramsey Road, Shirley, NY 11967, USA

Storage The shelf life of liquid form is 6 months at -20 centigrade/-80 centigrade. The shelf life of lyophilized form is 12 months at -20 centigrade/-80 centigrade.

GENE INFORMATION

Gene Name [PNPLA2 patatin-like phospholipase domain containing 2 \[Homo sapiens \]](#)

Official Symbol [PNPLA2](#)

Synonyms PNPLA2; patatin-like phospholipase domain containing 2; TGL; TTS2; PEDF-R; FP17548; TTS-2.2; DESNUTRIN; DKFZp667M109; 1110001C14Rik; triglyceride hydrolase; adipose triglyceride lipase; transport-secretion protein 2.2; pigment epithelium-derived factor; Patatin-like phospholipase domain-containing protein 2; EC 3.1.1.3; Adipose triglyceride lipase; Desnutrin; Transport-secretion protein 2; TTS2.2; Calcium-independent phospholipase A2; IPLA2-zeta; Pigment epithelium-derived factor

Gene ID [57104](#)

mRNA Refseq [NM_020376](#)

Protein Refseq [NP_065109](#)

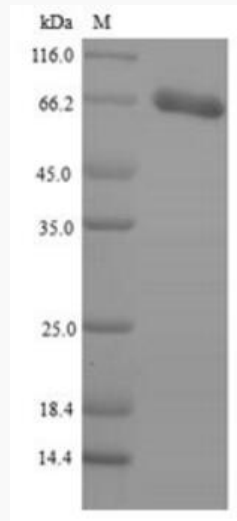
MIM [609059](#)

UniProt ID [Q96AD5](#)

 Tel: 1-631-559-9269 1-516-512-3133

 Email: info@creative-biomart.com  Fax: 1-631-938-8127

 45-1 Ramsey Road, Shirley, NY 11967, USA



 Tel: 1-631-559-9269 1-516-512-3133

 Email: info@creative-biomart.com  Fax: 1-631-938-8127

 45-1 Ramsey Road, Shirley, NY 11967, USA