

Recombinant Full Length Human PNPLA2 Protein, C-Flag-tagged

Cat. No. PNPLA2-251HFL **Lot. No.** (See product label)

SPECIFICATION

Product Overview	Recombinant Full Length Human PNPLA2 Protein, fused to Flag-tag at C-terminus, was expressed in Mammalian cells.
Species	Human
Source	Mammalian Cells
Description	This gene encodes an enzyme which catalyzes the first step in the hydrolysis of triglycerides in adipose tissue. Mutations in this gene are associated with neutral lipid storage disease with myopathy.
Form	25 mM Tris HCl, pH 7.3, 100 mM glycine, 10% glycerol.
Molecular Mass	55.1 kDa
AA Sequence	<p>MFPREKTWNISFAGCGFLGVYYVGVASCLREHAPFLVANATHIYGASAGALTATALV TGVCCLGEAGAKFI EVSKEARKRFLGPLHPSFNLVKIIRSFLKVLPADESHEHASGRLG ISLTRVSDGENVIISHFNSKDELIQ ANVCSGFIPVYCGLIPPSLQGVRYVDGGISDNLP LYELKNTITVSPFSGESDIPCQDSSTNIHELVRTNT SIQFNLRNLYRLSKALFPPEPLV LREMCKQGYRDGLRFLQRNGLLNRPNPLLALPPARPHGPEKDKQAVE SAQAEDYS QLPGEDHILEHLPARLNEALLEACVEPTDLLTTLNMLPVRLATAMMVPYTLPLESAL SFTI RLEWLDPVPEDIRWMKEQTGSICQYLVMRAKRKLRHLP SRLPEQVELRRV QSLPSVPLSCAAYREALP GWMRNLSLGDALAKWEECQRQLLLGLFCTNVAFPPE ALRM RAPADPAPAPADPASPQHQLAGPAPLLST</p>

 Tel: 1-631-559-9269 1-516-512-3133

 Email: info@creative-biomart.com  Fax: 1-631-938-8127

 45-1 Ramsey Road, Shirley, NY 11967, USA

PAPEARPVIGALGLTRTRPLEQKLISEEDLAANDILDYKDDDDKV

Purity > 80% as determined by SDS-PAGE and Coomassie blue staining.

Stability Stable for 12 months from the date of receipt of the product under proper storage and handling conditions. Avoid repeated freeze-thaw cycles.

Storage Store at -80 centigrade.

Concentration >50 ug/mL as determined by microplate BCA method.

Preparation Recombinant protein was captured through anti-DDK affinity column followed by conventional chromatography steps.

Protein Families Transmembrane

Full Length Full L.

GENE INFORMATION

Gene Name [PNPLA2 patatin like phospholipase domain containing 2 \[Homo sapiens \(human\) \]](#)

Official Symbol [PNPLA2](#)

Synonyms ATGL; TTS2; PEDF-R; FP17548; TTS-2.2; iPLA2zeta; 1110001C14Rik

Gene ID [57104](#)

mRNA Refseq [NM_020376.4](#)

Protein Refseq [NP_065109.1](#)

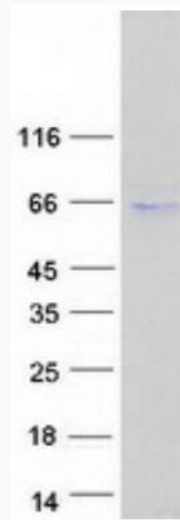
 Tel: 1-631-559-9269 1-516-512-3133

 Email: info@creative-biomart.com  Fax: 1-631-938-8127

 45-1 Ramsey Road, Shirley, NY 11967, USA

MIM 609059

UniProt ID Q96AD5



Coomassie blue staining of purified PNPLA2 protein.

 Tel: 1-631-559-9269 1-516-512-3133

 Email: info@creative-biomart.com  Fax: 1-631-938-8127

 45-1 Ramsey Road, Shirley, NY 11967, USA