

Recombinant Human PNPLA3 protein, GST-tagged

Cat. No. PNPLA3-1819H Lot. No. (See product label)

SPECIFICATION

Product Overview	Recombinant Human PNPLA3 protein(229-339 aa), fused with N-terminal GST tag, was expressed in E.coli.
Species	Human
Source	E.coli
ProteinLength	229-339 aa
Form	The purified protein was lyophilized from sterile phosphate-buffered saline (PBS: 58 mM Na ₂ HPO ₄ , 17 mM NaH ₂ PO ₄ , 68 mM NaCl, pH 8.0). Prior to lyophilization, 5% (w/v) trehalose and 5% (w/v) mannitol were incorporated as cryoprotective excipients. The protein was eluted with a buffer containing 100 mM reduced glutathione (GSH).
AASequence	PDLKVLGEICLRGYLDAFRFLEEKGICNRPQPGLKSSSEGMDPEVAMPSWANMSLD SSPESAALAVRLEGDELLDHLRLSILPWDESILDTLSPRLATALSEEMKDKGGYM
Purity	85%, by SDS-PAGE with Coomassie Brilliant Blue staining.
Storage	Store at 2-8°C for 1-2 weeks. Aliquot and store at -20°C to -80°C for up to 3 months, reconstitution with sterile water and addition of an equal volume of glycerol. Avoid repeat freeze-thaw cycles.
Reconstitution	Dissolve the product in 200

 Tel: 1-631-559-9269 1-516-512-3133

 Email: info@creative-biomart.com  Fax: 1-631-938-8127

 45-1 Ramsey Road, Shirley, NY 11967, USA

μl sterile water to achieve a working concentration of 0.25 g/μl. If experimental compatibility allows, mix the aqueous solution with an equal volume of glycerol (1:1 ratio) after initial reconstitution.

GENE INFORMATION

Gene Name [PNPLA3 patatin-like phospholipase domain containing 3 \[Homo sapiens \]](#)

Official Symbol [PNPLA3](#)

Synonyms PNPLA3; patatin-like phospholipase domain containing 3; adiponutrin , ADPN, C22orf20, chromosome 22 open reading frame 20; patatin-like phospholipase domain-containing protein 3; adiponutrin; DJ796117.1; FLJ22012; iPLA2-epsilon; acylglycerol O-acyltransferase; calcium-independent phospholipase A2-epsilon; ADPN; C22orf20; iPLA(2)epsilon;

Gene ID [80339](#)

mRNA Refseq [NM_025225](#)

Protein Refseq [NP_079501](#)

MIM [609567](#)

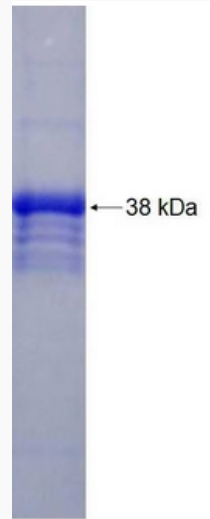
UniProt ID [Q9NST1](#)

 Tel: 1-631-559-9269 1-516-512-3133

 Email: info@creative-biomart.com  Fax: 1-631-938-8127

 45-1 Ramsey Road, Shirley, NY 11967, USA

SDS-PAGE



 Tel: 1-631-559-9269 1-516-512-3133

 Email: info@creative-biomart.com  Fax: 1-631-938-8127

 45-1 Ramsey Road, Shirley, NY 11967, USA