

Recombinant Human PNPLA3 Protein, GST-tagged

Cat. No. PNPLA3-26H Lot. No. (See product label)

SPECIFICATION

Product Overview	Recombinant Human PNPLA3(1 a.a. - 481 a.a.) fused with GST tag at N-terminal was expressed in Wheat Germ.
Species	Human
Source	Wheat Germ
ProteinLength	1-481 a.a.
Form	50 mM Tris-HCl, 10 mM reduced Glutathione, pH=8.0 in the elution buffer.
Molecular Mass	79.2 kDa
AA Sequence	<p>MYDAERGWLSL SFAGCGFLGFYHVGATRCLSEHAPHLLRDARMLFGASAGALHCVG VLSGIPLEQTLQVLSDLVRKARSRNIGIFHPSFNLSKFLRQGLGKCLPANVHQLISGKI GISLTRVSDGENVLVSDFRSKDEVVDALVCSCFMPFYSGLIPPSFRGVRYVDGGVS DNVFPIDAKTTITVSPFYGEYDICKPKVKSTNFLHVDITKLSRLCTGNLYLLSRAFVPP DLKVLGEICLRGYLDAFRFLEEKGICNRPQPGLKSSSEGMDPEVAMP SWANMSLDS SPESAALAVRLEGDEL LDHLRLSILPWDESILDTLSPRLATALSEEMKDKGGYMSKIC NLLPIRIMS YVMLPCTLPVESAIAIVQRLVTWLPDMPDDVLWLQWVTSQVFTRVLMC LLPASRSQMPVSSQQASPCTPEQDWPCWTPCSPEGCPAETKAEATPRSILRSSLNF FLGNKVPAGAEGLSTFPFSLEKSL</p>
Applications	Enzyme-linked Immunoabsorbent Assay; Western Blot (Recombinant protein); Antibody Production; Protein Array

 Tel: 1-631-559-9269 1-516-512-3133

 Email: info@creative-biomart.com  Fax: 1-631-938-8127

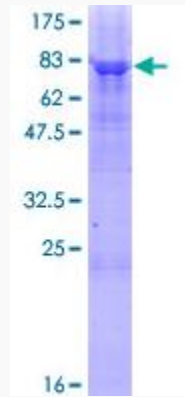
 45-1 Ramsey Road, Shirley, NY 11967, USA

Notes	Best use within three months from the date of receipt of this protein.
Storage	Store at -80 centigrade. Aliquot to avoid repeated freezing and thawing.
GENE INFORMATION	
Gene Name	PNPLA3 patatin-like phospholipase domain containing 3 [Homo sapiens]
Official Symbol	PNPLA3
Synonyms	PNPLA3; patatin-like phospholipase domain containing 3; adiponutrin , ADPN, C22orf20, chromosome 22 open reading frame 20; patatin-like phospholipase domain-containing protein 3; adiponutrin; dJ796I17.1; FLJ22012; iPLA2-epsilon; acylglycerol O-acyltransferase; calcium-independent phospholipase A2-epsilon; ADPN; C22orf20; iPLA(2)epsilon;
Gene ID	80339
mRNA Refseq	NM_025225
Protein Refseq	NP_079501
MIM	609567
UniProt ID	Q9NST1

 Tel: 1-631-559-9269 1-516-512-3133

 Email: info@creative-biomart.com  Fax: 1-631-938-8127

 45-1 Ramsey Road, Shirley, NY 11967, USA



 Tel: 1-631-559-9269 1-516-512-3133

 Email: info@creative-biomart.com  Fax: 1-631-938-8127

 45-1 Ramsey Road, Shirley, NY 11967, USA