

Recombinant Full Length Human PNPLA3 Protein, C-Flag-tagged

Cat. No. PNPLA3-26HFL **Lot. No.** (See product label)

SPECIFICATION

Product Overview	Recombinant Full Length Human PNPLA3 Protein, fused to Flag-tag at C-terminus, was expressed in Mammalian cells.
Species	Human
Source	Mammalian Cells
Description	The protein encoded by this gene is a triacylglycerol lipase that mediates triacylglycerol hydrolysis in adipocytes. The encoded protein, which appears to be membrane bound, may be involved in the balance of energy usage/storage in adipocytes.
Form	25 mM Tris HCl, pH 7.3, 100 mM glycine, 10% glycerol.
Molecular Mass	52.7 kDa
AA Sequence	<p>MYDAERGWLSL SFAGCGFLGFYHVGATRCLSEHAPHLLRDARMLFGASAGALHCVG VLSGIPLEQTLQVLS DLVRKARSRNIGIFHPSFNLSKFLRQGLGKCLPANVHQLISGKI GISLTRVSDGENVLVSDFRSKDEVVD ALVCSCFMPFYSGLIPPSFRGVRYVDGGVS DNVPFIDAKTTITVSPFYGEYDICKPKVKSTNFLHVDITKL SLRLCTGNLYLLSRAFVPP DLKVLGEICLRGYLDAFRFLEEKGICNRPQPGLKSSSEGMDPEVAMPSWAN MSLDS SPESAALAVRLEGDELDDHLRLSILPWDESILDTLSPRLATALSEEMKDKGGYMSKIC NLLPIRI MSYVMLPCTLPVESAIIVQRLVTWLPDMPDDVLWLQWVTSQVFTRVLMC LLPASRSQMPVSSQQASPCT</p>

 Tel: 1-631-559-9269 1-516-512-3133

 Email: info@creative-biomart.com  Fax: 1-631-938-8127

 45-1 Ramsey Road, Shirley, NY 11967, USA

PEQDWPCWTPCSPEGCPAETKAEATPR SILRSSLNFFLG NKVPAGAEGLSTFPSFS
LEKSLTRTRPLEQKLISEEDLAANDILDYKDDDDKV

Purity	> 80% as determined by SDS-PAGE and Coomassie blue staining.
Stability	Stable for 12 months from the date of receipt of the product under proper storage and handling conditions. Avoid repeated freeze-thaw cycles.
Storage	Store at -80 centigrade.
Concentration	>50 ug/mL as determined by microplate BCA method.
Preparation	Recombinant protein was captured through anti-DDK affinity column followed by conventional chromatography steps.
Protein Pathways	Glycerolipid metabolism, Glycerophospholipid metabolism, Limonene and pinene degradation, Metabolic pathways, Phenylalanine metabolism, Tyrosine metabolism
Full Length	Full L.

GENE INFORMATION

Gene Name	PNPLA3 patatin like phospholipase domain containing 3 [Homo sapiens (human)]
Official Symbol	PNPLA3
Synonyms	ADPN; C22orf20; iPLA(2)epsilon
Gene ID	80339
mRNA Refseq	NM_025225.3

 Tel: 1-631-559-9269 1-516-512-3133

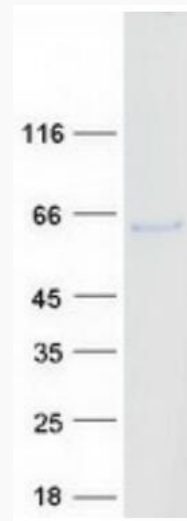
 Email: info@creative-biomart.com  Fax: 1-631-938-8127

 45-1 Ramsey Road, Shirley, NY 11967, USA

Protein Refseq NP_079501.2

MIM 609567

UniProt ID Q9NST1



Coomassie blue staining of purified PNPLA3 protein.

 Tel: 1-631-559-9269 1-516-512-3133

 Email: info@creative-biomart.com  Fax: 1-631-938-8127

 45-1 Ramsey Road, Shirley, NY 11967, USA