

Recombinant Human PNPLA3 Protein (I148M Mutation), GST tagged

Cat. No. PNPLA3-27H Lot. No. (See product label)

SPECIFICATION

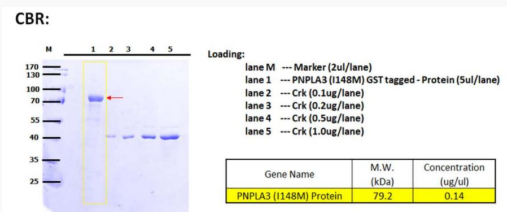
| | |
|-------------------------|---|
| Product Overview | Recombinant Human PNPLA3 Protein (I148M Mutation) with GST tag was expressed in Wheat germ cell free in vitro. |
| Species | Human |
| Source | Wheat germ cell free in vitro |
| Description | The protein encoded by this gene is a triacylglycerol lipase that mediates triacylglycerol hydrolysis in adipocytes. The encoded protein, which appears to be membrane bound, may be involved in the balance of energy usage/storage in adipocytes. |
| Molecular Mass | The protein has a calculated MW of 79.2 kDa. |
| Purity | > 80% by SDS-PAGE |
| Storage | Store it under sterile conditions at -80 centigrade. It is recommended that the protein be aliquoted for optimal storage. Avoid repeated freeze-thaw cycles. |
| Concentration | 0.14 mg/mL |
| Storage Buffer | 50 mM Tris-HCl, 10 mM reduced Glutathione, pH 8.0 |

GENE INFORMATION

 Tel: 1-631-559-9269 1-516-512-3133

 Email: info@creative-biomart.com  Fax: 1-631-938-8127

 45-1 Ramsey Road, Shirley, NY 11967, USA

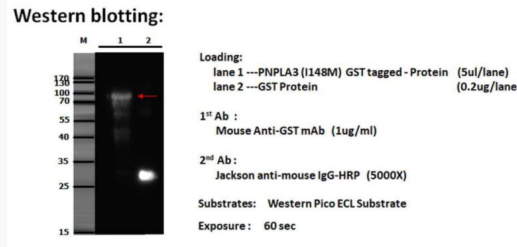
| Gene Name | PNPLA3 patatin-like phospholipase domain containing 3 [Homo sapiens (human)] | | | | | | |
|------------------------|---|-----------------------|------------|-----------------------|------------------------|------|------|
| Official Symbol | PNPLA3 | | | | | | |
| Synonyms | PNPLA3; patatin-like phospholipase domain containing 3; adiponutrin, ADPN, C22orf20, chromosome 22 open reading frame 20; patatin-like phospholipase domain-containing protein 3; adiponutrin; dJ796I17.1; FLJ22012; iPLA2-epsilon; acylglycerol O-acyltransferase; calcium-independent phospholipase A2-epsilon; ADPN; C22orf20; iPLA(2)epsilon; | | | | | | |
| Gene ID | 80339 | | | | | | |
| mRNA Refseq | NM_025225 | | | | | | |
| Protein Refseq | NP_079501 | | | | | | |
| MIM | 609567 | | | | | | |
| UniProt ID | Q9NST1 | | | | | | |
| CBR |  <p>CBR:</p> <table border="1"> <thead> <tr> <th>Gene Name</th> <th>M.W. (kDa)</th> <th>Concentration (ug/ul)</th> </tr> </thead> <tbody> <tr> <td>PNPLA3 (1148M) Protein</td> <td>79.2</td> <td>0.14</td> </tr> </tbody> </table> | Gene Name | M.W. (kDa) | Concentration (ug/ul) | PNPLA3 (1148M) Protein | 79.2 | 0.14 |
| Gene Name | M.W. (kDa) | Concentration (ug/ul) | | | | | |
| PNPLA3 (1148M) Protein | 79.2 | 0.14 | | | | | |

Tel: 1-631-559-9269 1-516-512-3133

Email: info@creative-biomart.com Fax: 1-631-938-8127

45-1 Ramsey Road, Shirley, NY 11967, USA

WB



 Tel: 1-631-559-9269 1-516-512-3133

 Email: info@creative-biomart.com  Fax: 1-631-938-8127

 45-1 Ramsey Road, Shirley, NY 11967, USA