

# Recombinant Human POLE3 Protein, Myc/DDK-tagged, C13 and N15-labeled

Cat. No. POLE3-4950H Lot. No. (See product label)

## SPECIFICATION

<b>Product Overview</b>	POLE3 MS Standard C13 and N15-labeled recombinant protein (NP_059139) with a C-terminal MYC/DDK tag, was expressed in HEK293 cells.
<b>Species</b>	Human
<b>Source</b>	HEK293
<b>Description</b>	POLE3 is a histone-fold protein that interacts with other histone-fold proteins to bind DNA in a sequence-independent manner. These histone-fold protein dimers combine within larger enzymatic complexes for DNA transcription, replication, and packaging.
<b>Molecular Mass</b>	16.9 kDa
<b>AA Sequence</b>	MAERPEDLNLPNAVITRIIKEALPDGVNISKEARSAISRAASVFLYATSCANNFAMKG KRKTLNASDVLSAMEEMEFQRFVTPLKEALEAYRREQKGKKEASEQKKKDKDKKTD SEEQDKSRDEDNDEDEERLEEEEQNEEEVNDNTRTRPLEQKLISEEDLAANDILDYK DDDDKV
<b>Purity</b>	> 80% as determined by SDS-PAGE and Coomassie blue staining
<b>Stability</b>	Stable for 3 months from receipt of products under proper storage and handling conditions.
<b>Storage</b>	Store at -80 centigrade. Avoid repeated freeze-thaw cycles.

 Tel: 1-631-559-9269 1-516-512-3133

 Email: [info@creative-biomart.com](mailto:info@creative-biomart.com)  Fax: 1-631-938-8127

 45-1 Ramsey Road, Shirley, NY 11967, USA

**Concentration** 50 µg/mL as determined by BCA

**Storage Buffer** 100 mM glycine, 25 mM Tris-HCl, pH 7.3.

## GENE INFORMATION

**Gene Name** POLE3 DNA polymerase epsilon 3, accessory subunit [ Homo sapiens (human) ]

**Official Symbol** POLE3

**Synonyms**

POLE3; polymerase (DNA directed), epsilon 3 (p17 subunit); DNA polymerase epsilon subunit 3; arsenic transactivated protein; CHARAC17; CHRAC17; chromatin accessibility complex 17; DNA polymerase epsilon p17 subunit; histone fold protein CHRAC17; p17; Ybl1; asTP; CHRAC-17; huCHRAC17; DNA polymerase II subunit 3; arsenic-transactivated protein; DNA polymerase epsilon subunit p17; chromatin accessibility complex 17 kDa protein; YBL1;

**Gene ID** 54107

**mRNA Refseq** NM\_017443

**Protein Refseq** NP\_059139

**MIM** 607267

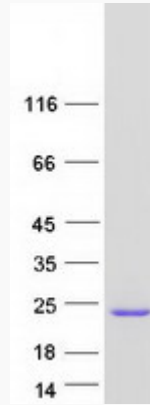
**UniProt ID** Q9NRF9

 Tel: 1-631-559-9269 1-516-512-3133

 Email: [info@creative-biomart.com](mailto:info@creative-biomart.com)  Fax: 1-631-938-8127

 45-1 Ramsey Road, Shirley, NY 11967, USA

SDS-PAGE



 Tel: 1-631-559-9269 1-516-512-3133

 Email: [info@creative-biomart.com](mailto:info@creative-biomart.com)  Fax: 1-631-938-8127

 45-1 Ramsey Road, Shirley, NY 11967, USA