

Recombinant Human POMC Protein (Glu179-Glu267), N-His tagged

Cat. No. POMC-4952H Lot. No. (See product label)

SPECIFICATION

Product Overview	Recombinant human POMC (Glu179-Glu267) fused with the N-His tag was expressed in E. coli.
Species	Human
Source	E.coli
ProteinLength	Glu179-Glu267
Form	Lyophilized powder/frozen liquid
Molecular Mass	12.12 kDa
Purity	>90% as determined by SDS-PAGE.
Notes	For research use only.
Storage	Use a manual defrost freezer and avoid repeated freeze thaw cycles. Store at 2 to 8 centigrade for one week. Store at -20 to -80 centigrade for twelve months from the date of receipt.
Storage Buffer	0.01M PBS, pH 7.4, 0.02% NLS
Reconstitution	Reconstitute in sterile water for a stock solution.

 Tel: 1-631-559-9269 1-516-512-3133

 Email: info@creative-biomart.com  Fax: 1-631-938-8127

 45-1 Ramsey Road, Shirley, NY 11967, USA

Shipping They are shipped out with dry ice/blue ice unless customers require otherwise.

GENE INFORMATION

Gene Name POMC proopiomelanocortin [Homo sapiens (human)]

Official Symbol POMC

Synonyms

POMC; proopiomelanocortin; pro-opiomelanocortin; ACTH; adrenocorticotrophic hormone; adrenocorticotropin; alpha melanocyte stimulating hormone; beta endorphin; beta lipotropin; beta melanocyte stimulating hormone; CLIP; LPH; MSH; NPP; POC; beta-LPH; beta-MSH; alpha-MSH; gamma-LPH; gamma-MSH; beta-endorphin; met-enkephalin; lipotropin beta; lipotropin gamma; melanotropin beta; melanotropin alpha; melanotropin gamma; pro-ACTH-endorphin; corticotropin-lipotropin; proopiomelanocortin preproprotein; beta-melanocyte-stimulating hormone; alpha-melanocyte-stimulating hormone; corticotropin-like intermediary peptide;

Gene ID 5443

mRNA Refseq NM_000939

Protein Refseq NP_000930

MIM 176830

UniProt ID P01189

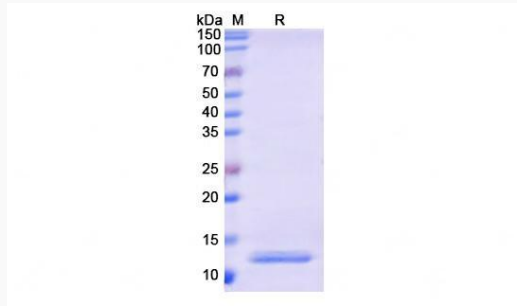
 Tel: 1-631-559-9269 1-516-512-3133

 Email: info@creative-biomart.com  Fax: 1-631-938-8127

 45-1 Ramsey Road, Shirley, NY 11967, USA



SDS-PAGE



Tel: 1-631-559-9269 1-516-512-3133

Email: info@creative-biomart.com Fax: 1-631-938-8127

45-1 Ramsey Road, Shirley, NY 11967, USA