

Recombinant Human PON1 protein, His-SUMO-tagged

Cat. No. PON1-3300H Lot. No. (See product label)

SPECIFICATION

Product Overview	Recombinant Human PON1 protein(Ala2~Leu355), fused with Two N-terminal Tags, His-tag and SUMO-tag, was expressed in E.coli.
Species	Human
Source	E.coli
ProteinLength	Ala2~Leu355
Form	PBS, pH7.4, containing 0.01% SKL, 1mM DTT, 5% Trehalose and Proclin300.
Molecular Mass	21kDa
Endotoxin	<1.0EU per 1g (determined by the LAL method)
Purity	> 90%
Storage	Avoid repeated freeze/thaw cycles. Store at 2-8°C for one month. Aliquot and store at -80°C for 12 months.
Reconstitution	Reconstitute in 10mM PBS (pH7.4) to a concentration of 0.1-1.0 mg/mL. Do not vortex.

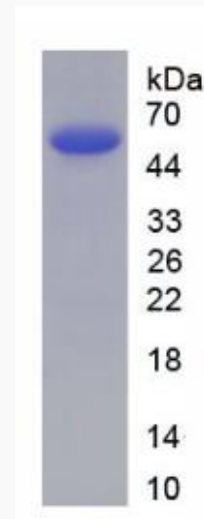
GENE INFORMATION

 Tel: 1-631-559-9269 1-516-512-3133

 Email: info@creative-biomart.com  Fax: 1-631-938-8127

 45-1 Ramsey Road, Shirley, NY 11967, USA

Gene Name	PON1 paraoxonase 1 [Homo sapiens]
Official Symbol	PON1
Synonyms	PON1; paraoxonase 1; PON; serum paraoxonase/arylesterase 1; ESA; esterase A; K-45; PON 1; A-esterase 1; paraoxonase B-type; aromatic esterase 1; arylesterase B-type; serum aryldiacylphosphatase; serum aryldialkylphosphatase 1; MVCD5;
Gene ID	5444
mRNA Refseq	NM_000446
Protein Refseq	NP_000437
UniProt ID	P27169

SDS-PAGE


 Tel: 1-631-559-9269 1-516-512-3133

 Email: info@creative-biomart.com  Fax: 1-631-938-8127

 45-1 Ramsey Road, Shirley, NY 11967, USA