

# Recombinant Full Length Human PON1 Protein, C-Flag-tagged

Cat. No. PON1-499HFL Lot. No. (See product label)

## SPECIFICATION

<b>Product Overview</b>	Recombinant Full Length Human PON1 Protein, fused to Flag-tag at C-terminus, was expressed in Mammalian cells.
<b>Species</b>	Human
<b>Source</b>	Mammalian Cells
<b>Description</b>	This gene encodes a member of the paraoxonase family of enzymes and exhibits lactonase and ester hydrolase activity. Following synthesis in the kidney and liver, the enzyme is secreted into the circulation, where it binds to high density lipoprotein (HDL) particles and hydrolyzes thiolactones and xenobiotics, including paraoxon, a metabolite of the insecticide parathion. Polymorphisms in this gene may be associated with coronary artery disease and diabetic retinopathy. The gene is found in a cluster of three related paraoxonase genes on chromosome 7.
<b>Form</b>	25 mM Tris HCl, pH 7.3, 100 mM glycine, 10% glycerol.
<b>Molecular Mass</b>	39.6 kDa
<b>AA Sequence</b>	MAKLIALTLLGMGLALFRNHQSSYQTRLNALREVQPVELPNCNLVKG IETGSEDLEIL PNGLAFISSGLK YPGIKSFNPNSPGKILLMDLNEEDPTVLELGITGSKFDVSSFNPHGI STFTDEDNAMYLLVVNHPDAKST VELFKFQEEEEKSLLHLKTIRHKLLPNLNDIVAVGP EHFYGTNDHYFLDPYLQSWEMYLGLAWSYVVYYSP SEVRVVAEGFDFANGINISPD GKYVYIAELLAHKIHVYEKHANDWTLTPLKSLDFNTLVDNISVDPETGDL WVGCHPNG MKIFFYDSENPPASEVLRIQNILTEEPKVTQVYAENGTVLQGSTVASVYKGLLIGTVF

 Tel: 1-631-559-9269 1-516-512-3133

 Email: [info@creative-biomart.com](mailto:info@creative-biomart.com)  Fax: 1-631-938-8127

 45-1 Ramsey Road, Shirley, NY 11967, USA

	HKA LYCELTRTRPLEQKLISEEDLAANDILDYKDDDDKV
<b>Purity</b>	> 80% as determined by SDS-PAGE and Coomassie blue staining.
<b>Stability</b>	Stable for 12 months from the date of receipt of the product under proper storage and handling conditions. Avoid repeated freeze-thaw cycles.
<b>Storage</b>	Store at -80 centigrade.
<b>Concentration</b>	>50 ug/mL as determined by microplate BCA method.
<b>Preparation</b>	Recombinant protein was captured through anti-DDK affinity column followed by conventional chromatography steps.
<b>Protein Families</b>	Druggable Genome, Secreted Protein
<b>Protein Pathways</b>	Metabolic pathways
<b>Full Length</b>	Full L.
<b>GENE INFORMATION</b>	
<b>Gene Name</b>	PON1 paraoxonase 1 [ Homo sapiens (human) ]
<b>Official Symbol</b>	PON1
<b>Synonyms</b>	ESA; PON; MVCD5
<b>Gene ID</b>	5444

 Tel: 1-631-559-9269 1-516-512-3133

 Email: [info@creative-biomart.com](mailto:info@creative-biomart.com)  Fax: 1-631-938-8127

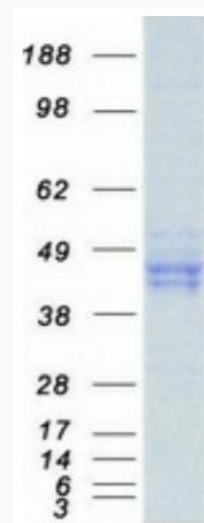
 45-1 Ramsey Road, Shirley, NY 11967, USA

mRNA Refseq [NM\\_000446.7](#)

Protein Refseq [NP\\_000437.3](#)

MIM [168820](#)

UniProt ID [P27169](#)



Coomassie blue staining of purified PON1 protein.

 Tel: 1-631-559-9269 1-516-512-3133

 Email: [info@creative-biomart.com](mailto:info@creative-biomart.com)  Fax: 1-631-938-8127

 45-1 Ramsey Road, Shirley, NY 11967, USA