

# Recombinant Full Length Human POR Protein, C-Flag-tagged

**Cat. No.** POR-846HFL    **Lot. No.** (See product label)

## SPECIFICATION

<b>Product Overview</b>	Recombinant Full Length Human POR Protein, fused to Flag-tag at C-terminus, was expressed in Mammalian cells.
<b>Species</b>	Human
<b>Source</b>	Mammalian Cells
<b>Description</b>	<p>This gene encodes an endoplasmic reticulum membrane oxidoreductase that is essential for multiple metabolic processes, including reactions catalyzed by cytochrome P450 proteins for metabolism of steroid hormones, drugs and xenobiotics. The encoded protein has a flavin adenine dinucleotide (FAD)-binding domain and a flavodoxin-like domain which bind two cofactors, FAD and FMN, that allow it to donate electrons directly from NADPH to all microsomal P450 enzymes. Mutations in this gene cause a complex set of disorders, including apparent combined P450C17 and P450C21 deficiency, amenorrhea and disordered steroidogenesis, congenital adrenal hyperplasia and Antley-Bixler syndrome, that resemble those caused by defects in steroid metabolizing enzymes such as aromatase, 21-hydroxylase, and 17 alpha-hydroxylase.</p>
<b>Form</b>	25 mM Tris HCl, pH 7.3, 100 mM glycine, 10% glycerol.
<b>Molecular Mass</b>	76.9 kDa
<b>AA Sequence</b>	MINMGDSHVDTSSSTVSEAVAEVSLFSMTDMILFSLIVGLLTYWFLFRKKKEEVPEFT KIQTLTSSVRES SFVEKMKKTGRNIIVFYGSQTGTAEEFANRLSKDAHRYGMRGMS

 Tel: 1-631-559-9269    1-516-512-3133

 Email: [info@creative-biomart.com](mailto:info@creative-biomart.com)     Fax: 1-631-938-8127

 45-1 Ramsey Road, Shirley, NY 11967, USA

ADPEEYDLADLSSLPEIDNALVVFCM ATYGEGDPTDNAQDFYDWLQETDVDLSGVK  
 FAVFGLGNKTYEHFNAMGKYVDKRLEQLGAQRIFELGLGD DDGNLEEDFITWREQF  
 WLAVCEHFGVEATGEESSIRQYELVVHTDIDAAKVYMGEMGRLKSYENQKPPFD A  
 KNPFLAAVTTNRKLNQGTERHLMHLELDISDSKIRYESGDHVAVYPANDSALVNQLG  
 KILGADLDVMS LNNLDEESNKKHPFPCPTSyrTALTYLDITNPPRTNVLYELAQY  
 ASEPSEQELLRKMASSSGEGKELYL SWVVEARRHILAILQDCPSLRPPIDHLCCELLP  
 RLQARYYSIASSSKVHPNSVHICAVVVEYETKAGRINK GVATNWLRAKEPVGENG  
 RALVPMFVRKSQFRLPFKATTPVIMVGPVGTGVAPFIGFIQERAWLRQQGKEV GETL  
 LYYGCRRSDEDYLYREELAQFHRDGALTQLNVAFSREQSHKVYVQHLLKQDREHL  
 WKLIEGGAHIY  
 VCGDARNMARDVQNTFYDIVAELGAMEHAQAVDYIKKLMTKGRYSLDVWSTRTRPL  
 EQKLISEEDLAANDILDYKDDDDKV

<b>Purity</b>	> 80% as determined by SDS-PAGE and Coomassie blue staining.
<b>Stability</b>	Stable for 12 months from the date of receipt of the product under proper storage and handling conditions. Avoid repeated freeze-thaw cycles.
<b>Storage</b>	Store at -80 centigrade.
<b>Concentration</b>	>50 ug/mL as determined by microplate BCA method.
<b>Preparation</b>	Recombinant protein was captured through anti-DDK affinity column followed by conventional chromatography steps.
<b>Protein Families</b>	Druggable Genome, P450, Transmembrane
<b>Full Length</b>	Full L.

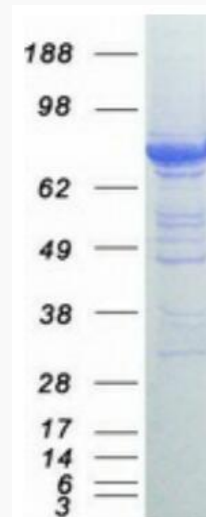
## GENE INFORMATION

 Tel: 1-631-559-9269 1-516-512-3133

 Email: [info@creative-biomart.com](mailto:info@creative-biomart.com)  Fax: 1-631-938-8127

 45-1 Ramsey Road, Shirley, NY 11967, USA

<b>Gene Name</b>	POR cytochrome p450 oxidoreductase [ Homo sapiens (human) ]
<b>Official Symbol</b>	POR
<b>Synonyms</b>	CPR; CYPOR; P450R
<b>Gene ID</b>	5447
<b>mRNA Refseq</b>	NM_001367562.3
<b>Protein Refseq</b>	NP_001354491.2
<b>MIM</b>	124015
<b>UniProt ID</b>	P16435



Coomassie blue staining of purified POR protein.

 Tel: 1-631-559-9269 1-516-512-3133

 Email: [info@creative-biomart.com](mailto:info@creative-biomart.com)  Fax: 1-631-938-8127

 45-1 Ramsey Road, Shirley, NY 11967, USA