

Recombinant Human POU2F1 protein, His & T7-tagged

Cat. No. POU2F1-7110H Lot. No. (See product label)

SPECIFICATION

Product Overview	Recombinant Human POU2F1 aa. (Asn413~Leu671 (Accession # P14859)) fused with N-terminal His & T7 tag was produced in E. coli cells.
Species	Human
Source	E.coli
ProteinLength	Asn413~Leu671
Form	Freeze-dried powder
Molecular Mass	Predicted Molecular Mass: 29.3kDa
Endotoxin	<1.0EU per 1ug (determined by the LAL method)
Purity	>95%
Characteristic	The isoelectric point is 7.1.
Applications	SDS-PAGE; WB; ELISA; IP.
Stability	The thermal stability is described by the loss rate of the target protein. The loss rate was determined by accelerated thermal degradation test, that is, incubate the protein at 37°C for 48h, and no obvious degradation and precipitation were observed. (Referring from China Biological Products Standard, which was calculated by the

 Tel: 1-631-559-9269 1-516-512-3133

 Email: info@creative-biomart.com  Fax: 1-631-938-8127

 45-1 Ramsey Road, Shirley, NY 11967, USA

Arrhenius equation.) The loss of this protein is less than 5% within the expiration date under appropriate storage condition.

Storage

Avoid repeated freeze/thaw cycles. Store at 2-8°C for one month. Aliquot and store at -80°C for 12 months.

Storage buffer

Supplied as lyophilized form in PBS, pH7.4, containing 5% sucrose, 0.01% sarcosyl.

Reconstitution

Reconstitute in sterile PBS, pH7.2-pH7.4.

GENE INFORMATION

Gene Name

POU2F1 POU class 2 homeobox 1 [Homo sapiens (human)]

Official Symbol

POU2F1

Synonyms

POU2F1; POU class 2 homeobox 1; OCT1; OTF1; oct-1B; POU domain, class 2, transcription factor 1; NF-A1; OTF-1; Octamer-binding transcription factor-1; oct-1; octamer-binding protein 1; octamer-binding transcription factor 1

Gene ID

5451

mRNA Refseq

NM_001198783.1

Protein Refseq

NP_001185712.1

UniProt ID

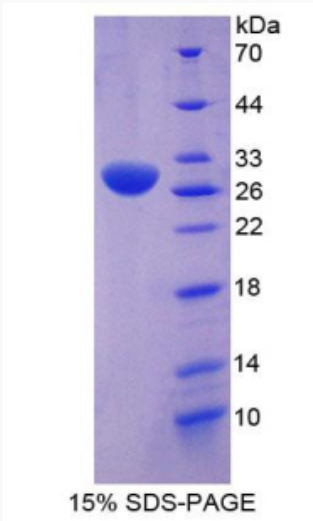
P14859

 Tel: 1-631-559-9269 1-516-512-3133

 Email: info@creative-biomart.com  Fax: 1-631-938-8127

 45-1 Ramsey Road, Shirley, NY 11967, USA

SDS-PAGE



 Tel: 1-631-559-9269 1-516-512-3133

 Email: info@creative-biomart.com  Fax: 1-631-938-8127

 45-1 Ramsey Road, Shirley, NY 11967, USA