

Active Recombinant Full Length Human POU5F1 Protein, C-Flag-tagged

Cat. No. POU5F1-327HFL **Lot. No.** (See product label)

SPECIFICATION

Product Overview	Recombinant Full Length Human POU5F1 Protein, fused to Flag-tag at C-terminus, was expressed in Mammalian cells.
Species	Human
Source	Mammalian Cells
Description	This gene encodes a transcription factor containing a POU homeodomain that plays a key role in embryonic development and stem cell pluripotency. Aberrant expression of this gene in adult tissues is associated with tumorigenesis. This gene can participate in a translocation with the Ewing's sarcoma gene on chromosome 21, which also leads to tumor formation. Alternative splicing, as well as usage of alternative AUG and non-AUG translation initiation codons, results in multiple isoforms. One of the AUG start codons is polymorphic in human populations. Related pseudogenes have been identified on chromosomes 1, 3, 8, 10, and 12.
Form	25 mM Tris HCl, pH 7.3, 100 mM glycine, 10% glycerol.
Bio-activity	EMSA assay
Molecular Mass	38.4 kDa
AA Sequence	MAGHLASDFAFSPPPGGGGDGPGGPEPGWVDPRTWLSFQGPPGGPGIGPGVGP GSEVWGIPPCPPPYEFC GGMAYCGPQVGVGLVPQGGLETSQPEGEAGVGVESNS

 Tel: 1-631-559-9269 1-516-512-3133

 Email: info@creative-biomart.com  Fax: 1-631-938-8127

 45-1 Ramsey Road, Shirley, NY 11967, USA

DGASPEPCTVTPGAVKLEKEKLEQNPEESQDIK ALQKELEQFAKLLKQKRITLGYTQ
 ADVGLTLGVLFQKVFVSQTTICRFEALQLSFKNMCKLRPLLQKWVEE ADNENLQEIC
 KAETLVQARKRKRTSIENRVRGNLENLFLQCPKPTLQQISHIAQQLGLEKDVVRVWF
 CN RRQKGRSSSDYAQREDFEAAGSPFSGGPVSFPLAPGPHFGTPGYGSPHFTAL
 YSSVPFPEGEAFPPVSV
 TTLGSPMHSNTRTRPLEQKLISEEDLAANDILDYKDDDDKV

Purity	> 80% as determined by SDS-PAGE and Coomassie blue staining.
Stability	Stable for 12 months from the date of receipt of the product under proper storage and handling conditions. Avoid repeated freeze-thaw cycles.
Storage	Store at -80 centigrade.
Concentration	>50 ug/mL as determined by microplate BCA method.
Preparation	Recombinant protein was captured through anti-DDK affinity column followed by conventional chromatography steps.
Protein Pathways	Adult stem cells, Cancer stem cells, Embryonic stem cells, Induced pluripotent stem cells, Stem cell - Pluripotency, Transcription Factors
Full Length	Full L.

GENE INFORMATION

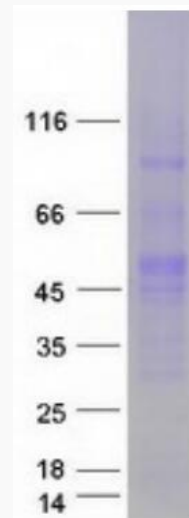
Gene Name	POU5F1 POU class 5 homeobox 1 [Homo sapiens (human)]
Official Symbol	POU5F1
Synonyms	OCT3; OCT4; OTF3; OTF4; OTF-3; Oct-3; Oct-4; Oct3/4

 Tel: 1-631-559-9269 1-516-512-3133

 Email: info@creative-biomart.com  Fax: 1-631-938-8127

 45-1 Ramsey Road, Shirley, NY 11967, USA

Gene ID	5460
mRNA Refseq	NM_002701.6
Protein Refseq	NP_002692.2
MIM	164177
UniProt ID	Q01860



Coomassie blue staining of purified POU5F1 protein.

Tel: 1-631-559-9269 1-516-512-3133

Email: info@creative-biomart.com Fax: 1-631-938-8127

45-1 Ramsey Road, Shirley, NY 11967, USA