

# Recombinant Full Length Human PPAT Protein, C-Flag-tagged

Cat. No. PPAT-1367HFL Lot. No. (See product label)

## SPECIFICATION

<b>Product Overview</b>	Recombinant Full Length Human PPAT Protein, fused to Flag-tag at C-terminus, was expressed in Mammalian cells.
<b>Species</b>	Human
<b>Source</b>	Mammalian Cells
<b>Description</b>	The protein encoded by this gene is a member of the purine/pyrimidine phosphoribosyltransferase family. It is a regulatory allosteric enzyme that catalyzes the first step of de novo purine nucleotide biosynthetic pathway. This gene and PAICS/AIRC gene, a bifunctional enzyme catalyzing steps six and seven of this pathway, are located in close proximity on chromosome 4, and divergently transcribed from an intergenic region.
<b>Form</b>	25 mM Tris HCl, pH 7.3, 100 mM glycine, 10% glycerol.
<b>Molecular Mass</b>	57.2 kDa
<b>AA Sequence</b>	MELEELGIREECGVFGCIASGEWPTQLDVPHVITLGLVGLQHRGQESAGIVTSDGSS VPTFKSHKGMGLV NHVFTEDNLKKLYVSNLIGHTRYATTGKCELENCQPFVVETL HGKIAVAHNGELVNAARLRKKLLRHGI GLSTSSDSEMITQLLAYTPPQEQQDDTPDWV ARIKNLMKEAPTAYSLLIMHRDVIYAVRDPYGNRPLCIGR LIPVSDINDKEKKTSETEG WVVSSESCSFLSIGARYYREVLPGEIVEISRHNVTLDIISRSEGNPVAFC IFEYVYFA RPDSMFEDQMVYTVRYRCGQQLAIEAPVDADLVSTVPESATPAALAYAGKCGLPYV EVLCKN RYVGRTFIQPNMRLRQLGVAKKFGVLSDNFKGKRIVLVDDSIVRGNTISPII

 Tel: 1-631-559-9269 1-516-512-3133

 Email: [info@creative-biomart.com](mailto:info@creative-biomart.com)  Fax: 1-631-938-8127

 45-1 Ramsey Road, Shirley, NY 11967, USA

KLLKESGAKEVHIRVASP PIKYPCFMGINIPTKEELIANKPEFDHLAEYLGANSVVYLS  
 VEGLVSSVQEGIKFKKQKEKKHDIMIQEN  
 GNGLECFEKSGHCTACLTGKYPVELEWTRTRPLEQKLISEEDLAANDILDYKDDDDK  
 V

<b>Purity</b>	> 80% as determined by SDS-PAGE and Coomassie blue staining.
<b>Stability</b>	Stable for 12 months from the date of receipt of the product under proper storage and handling conditions. Avoid repeated freeze-thaw cycles.
<b>Storage</b>	Store at -80 centigrade.
<b>Concentration</b>	>50 ug/mL as determined by microplate BCA method.
<b>Preparation</b>	Recombinant protein was captured through anti-DDK affinity column followed by conventional chromatography steps.
<b>Protein Families</b>	Druggable Genome, Protease
<b>Protein Pathways</b>	Alanine, aspartate and glutamate metabolism, Metabolic pathways, Purine metabolism
<b>Full Length</b>	Full L.

## GENE INFORMATION

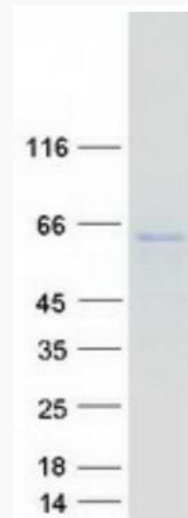
<b>Gene Name</b>	PPAT phosphoribosyl pyrophosphate amidotransferase [ Homo sapiens (human) ]
<b>Official Symbol</b>	PPAT
<b>Synonyms</b>	GPAT; PRAT; ATASE

 Tel: 1-631-559-9269 1-516-512-3133

 Email: [info@creative-biomart.com](mailto:info@creative-biomart.com)  Fax: 1-631-938-8127

 45-1 Ramsey Road, Shirley, NY 11967, USA

<b>Gene ID</b>	5471
<b>mRNA Refseq</b>	NM_002703.5
<b>Protein Refseq</b>	NP_002694.3
<b>MIM</b>	172450
<b>UniProt ID</b>	Q06203



Coomassie blue staining of purified PPAT protein.

 Tel: 1-631-559-9269 1-516-512-3133

 Email: [info@creative-biomart.com](mailto:info@creative-biomart.com)  Fax: 1-631-938-8127

 45-1 Ramsey Road, Shirley, NY 11967, USA