

# Recombinant Human PPAT Protein, Myc/DDK-tagged, C13 and N15-labeled

**Cat. No.** PPAT-597H    **Lot. No.** (See product label)

## SPECIFICATION

<b>Product Overview</b>	PPAT MS Standard C13 and N15-labeled recombinant protein (NP_002694) with a C-terminal MYC/DDK tag, was expressed in HEK293 cells.
<b>Species</b>	Human
<b>Source</b>	HEK293
<b>Description</b>	The protein encoded by this gene is a member of the purine/pyrimidine phosphoribosyltransferase family. It is a regulatory allosteric enzyme that catalyzes the first step of de novo purine nucleotide biosynthetic pathway. This gene and PAICS/AIRC gene, a bifunctional enzyme catalyzing steps six and seven of this pathway, are located in close proximity on chromosome 4, and divergently transcribed from an intergenic region.
<b>Molecular Mass</b>	57.4 kDa
<b>AA Sequence</b>	MELEELGIREECGVFGCIASGEWPTQLDVPHVITLGLVGLQHRGQESAGIVTSDGSS VPTFKSHKGMGLVNHVFTEDNLKKLYVSNLGIGHTRYATTGKCELENCQPFVVELTH GKIAVAHNGELVNAARLRKKLLRHGIGLSTSSDSEMITQLLAYTPPQEQQDDTPDWVA RIKNLMKEAPTAYSLLIMHRDVIYAVRDPYGNRPLCIGRLIPVSDINDKEKKTSETEGW VVSSESCSFLSIGARYYYREVLPGEIVEISRHNVTLDIISRSEGNPVAFCIFEYVYFAR PDSMFEDQMVYTVRYRCGQQLAIEAPVDADLVSTVPESATPAALAYAGKCGLPYVE VLCKNRYVGRFTIQPNMRLRQLGVAKKFGVLSDNFKGKRIVLVDDSIVRGNTISPIIKL

 Tel: 1-631-559-9269    1-516-512-3133

 Email: [info@creative-biomart.com](mailto:info@creative-biomart.com)     Fax: 1-631-938-8127

 45-1 Ramsey Road, Shirley, NY 11967, USA

LKESGAKEVHIRVASPPIKYPFCMGINIPTKEELIANKPEFDHLAEYLGANSVVYLSVE  
 GLVSSVQEGIKFKKQKEKKHDIMIQENGNLECFEKSGHCTACTLGKYPVELEWTRT  
 RPLEQKLISEEDLAANDILDYKDDDDKV

**Purity** > 80% as determined by SDS-PAGE and Coomassie blue staining

**Stability** Stable for 3 months from receipt of products under proper storage and handling conditions.

**Storage** Store at -80 centigrade. Avoid repeated freeze-thaw cycles.

**Concentration** 50 µg/mL as determined by BCA

**Storage Buffer** 100 mM glycine, 25 mM Tris-HCl, pH 7.3.

## GENE INFORMATION

**Gene Name** [PPAT phosphoribosyl pyrophosphate amidotransferase \[ Homo sapiens \(human\) \]](#)

**Official Symbol** [PPAT](#)

**Synonyms** PPAT; phosphoribosyl pyrophosphate amidotransferase; amidophosphoribosyltransferase; GPAT; PRAT; glutamine PRPP amidotransferase; glutamine phosphoribosylpyrophosphate amidotransferase; glutamine phosphoribosylpyrophosphatate amidotransferase; ATASE;

**Gene ID** [5471](#)

**mRNA Refseq** [NM\\_002703](#)

**Protein Refseq** [NP\\_002694](#)

 Tel: 1-631-559-9269 1-516-512-3133

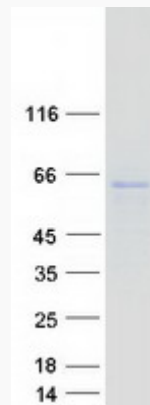
 Email: [info@creative-biomart.com](mailto:info@creative-biomart.com)  Fax: 1-631-938-8127

 45-1 Ramsey Road, Shirley, NY 11967, USA

**MIM** 172450

**UniProt ID** Q06203

**SDS-PAGE**



 Tel: 1-631-559-9269 1-516-512-3133

 Email: [info@creative-biomart.com](mailto:info@creative-biomart.com)  Fax: 1-631-938-8127

 45-1 Ramsey Road, Shirley, NY 11967, USA