

Recombinant Entamoeba Histolytica PPDK Protein (1-342 aa), His-SUMO-tagged

Cat. No. PPDK-916E Lot. No. (See product label)

SPECIFICATION

Product Overview Recombinant Entamoeba Histolytica PPDK Protein (1-342 aa) is produced by E. coli expression system. This protein is fused with a 6xHis-SUMO tag at the N-terminal.
Protein Description: Partial.

Species Entamoeba Histolytica

Source E.coli

ProteinLength 1-342 aa

Description Catalyzes the reversible phosphorylation of pyruvate and phosphate. In E.histolytica and C.symbiosus, PPDK functions in the direction of ATP synthesis.

Form Tris-based buffer, 50% glycerol

Molecular Mass 54.4 kDa

AA Sequence

```
MQRVYAFEDGDGTNKKLLGGKGAGLCTMTKIGLPVPQGFVITTEMCKQFIANGNKM
PEGLMEEVKKEYQLVEKKSGKVFGGEENPLLVSVRSGAAMSMPGMMDTILNLGLN
DKTVVALAKLTNNERFAYDSYRRFVSLFGKIALNACDEVYDKTLENKKVEKGVKLDT
ELDANDMKELAQVFIKKTEEFTKQFPVDPYAQLEFAICAVFRSWMGKRAVDYRRE
FKITPEQADGTAVSVVSMVYGNMGNDSATGVCFTTRDPGTGENMFFGEYLKNAQGE
DVGAGIRTPQIISKMAEDRDLPGCYEQLLDIRKKLEGYFHEVQDFEFTIERKKLYMLQ
TRNGK
```

 Tel: 1-631-559-9269 1-516-512-3133

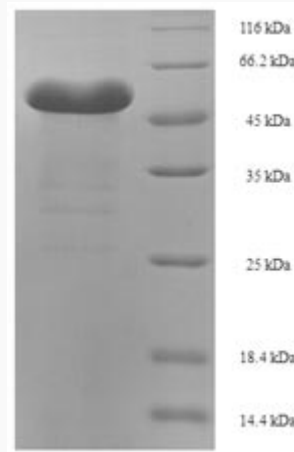
 Email: info@creative-biomart.com  Fax: 1-631-938-8127

 45-1 Ramsey Road, Shirley, NY 11967, USA

Purity	> 90% as determined by SDS-PAGE.
Notes	Repeated freezing and thawing is not recommended. Store working aliquots at 4 centigrade for up to one week.
Storage	The shelf life is related to many factors, storage state, buffer ingredients, storage temperature and the stability of the protein itself. Generally, the shelf life of liquid form is 6 months at -20 centigrade/-80 centigrade. The shelf life of lyophilized form is 12 months at -20 centigrade/-80 centigrade.
Concentration	A hardcopy of COA with concentration instruction is sent along with the products.

GENE INFORMATION

UniProt ID	P37213
-------------------	---



(Tris-Glycine gel) Discontinuous SDS-PAGE (reduced) with 5% enrichment gel and 15% separation gel.

 Tel: 1-631-559-9269 1-516-512-3133

 Email: info@creative-biomart.com  Fax: 1-631-938-8127

 45-1 Ramsey Road, Shirley, NY 11967, USA