

## Recombinant Escherichia coli O157:H7 PPIA Protein (25-190 aa), His-SUMO-tagged

Cat. No. PPIA-2096E Lot. No. (See product label)

### SPECIFICATION

<b>Product Overview</b>	Recombinant Escherichia coli O157:H7 PPIA Protein (25-190 aa) is produced by E. coli expression system. This protein is fused with a 6xHis-SUMO tag at the N-terminal. Research Area: Immunology. Protein Description: Full Length of Mature Protein.
<b>Species</b>	E.coli
<b>Source</b>	E.coli
<b>ProteinLength</b>	25-190 aa
<b>Description</b>	PPIases accelerate the folding of proteins. It catalyzes the cis-trans isomerization of proline imidic peptide bonds in oligopeptides (By similarity).
<b>Form</b>	Tris-based buffer,50% glycerol
<b>Molecular Mass</b>	34.1 kDa
<b>AA Sequence</b>	AKGDPHVLLTTSAGNIELELDKQKAPVSVQNFVDYVNSGFYNNTTFHRVIPGFMIQG GGFTEQMQQKKPNPPIKNEADNGLRNTRGTIAMARTADKDSATSQFFINVADNAFL DHGQRDFGYAVFGKVVKGMDVADKISQVPTHDVGPYQNVPSKPVVILSAKVLP
<b>Purity</b>	> 90% as determined by SDS-PAGE.

 Tel: 1-631-559-9269 1-516-512-3133

 Email: [info@creative-biomart.com](mailto:info@creative-biomart.com)  Fax: 1-631-938-8127

 45-1 Ramsey Road, Shirley, NY 11967, USA

**Notes** Repeated freezing and thawing is not recommended. Store working aliquots at 4 centigrade for up to one week.

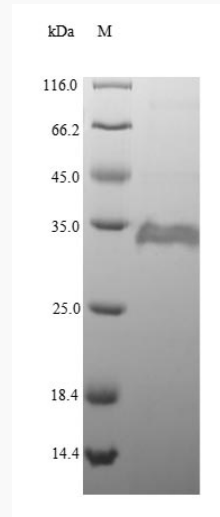
**Storage** The shelf life is related to many factors, storage state, buffer ingredients, storage temperature and the stability of the protein itself. Generally, the shelf life of liquid form is 6 months at -20 centigrade/-80 centigrade. The shelf life of lyophilized form is 12 months at -20 centigrade/-80 centigrade.

**Concentration** A hardcopy of COA with reconstitution instruction is sent along with the products.

## GENE INFORMATION

**Synonyms** ppiA; PPlase A Alternative name(s): Cyclophilin A Rotamase A;

**UniProt ID** [P0AFL5](https://www.uniprot.org/entry/P0AFL5)



(Tris-Glycine gel) Discontinuous SDS-PAGE (reduced) with 5% enrichment gel and 15% separation gel.

 Tel: 1-631-559-9269 1-516-512-3133

 Email: [info@creative-biomart.com](mailto:info@creative-biomart.com)  Fax: 1-631-938-8127

 45-1 Ramsey Road, Shirley, NY 11967, USA