

# Recombinant Human peptidylprolyl isomerase B Protein, His tagged

**Cat. No.** PPIB-001H    **Lot. No.** (See product label)

## SPECIFICATION

<b>Product Overview</b>	Recombinant human peptidylprolyl isomerase B Protein (34-216 aa) with His tag was expressed in E. coli.
<b>Species</b>	Human
<b>Source</b>	E.coli
<b>ProteinLength</b>	34-216aa
<b>Description</b>	The protein encoded by this gene is a cyclosporine-binding protein and is mainly located within the endoplasmic reticulum. It is associated with the secretory pathway and released in biological fluids. This protein can bind to cells derived from T- and B-lymphocytes, and may regulate cyclosporine A-mediated immunosuppression. Variants have been identified in this protein that give rise to recessive forms of osteogenesis imperfecta.
<b>Tag</b>	C-His
<b>Molecular Mass</b>	21 kDa
<b>AA Sequence</b>	MDEKKKGPKVTVKVYFDLRIGDEDVGRVIFGLFGKTVPKTVDNFVALATGEKGFYK NSKFHRVIKDFMIQGGDFTRGDGTGGKSIYGERFPDENFKLKHYGPGWVSMANAG KDTNGSQFFITTVKTAWLDGKHVVFVGKVLGMEVVRKVESTKTDSRDKPLKDVIID CGKIEVEKPFIAIAKEHHHHHHHH

 Tel: 1-631-559-9269    1-516-512-3133

 Email: [info@creative-biomart.com](mailto:info@creative-biomart.com)     Fax: 1-631-938-8127

 45-1 Ramsey Road, Shirley, NY 11967, USA

<b>Endotoxin</b>	< 1 EU/μg of protein (determined by LAL method)
<b>Purity</b>	> 90% by SDS-PAGE
<b>Storage</b>	Store it under sterile conditions at -80 centigrade. Easy to precipitate, Please Do Not Keep at 4 centigrade. It is recommended that the protein be aliquoted for optimal storage. Avoid repeated freeze-thaw cycles.
<b>Storage Buffer</b>	Sterile PBS, pH 7.4
<b>Concentration</b>	0.8 mg/mL by BCA

## GENE INFORMATION

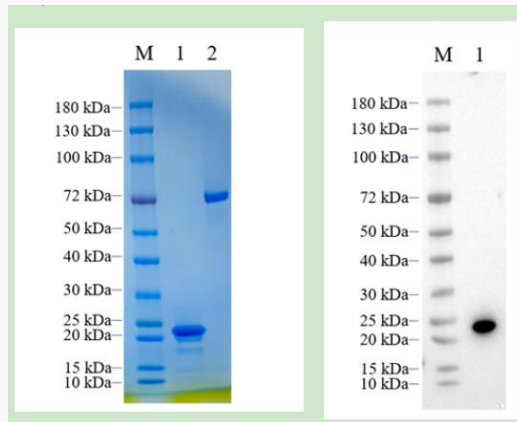
<b>Gene Name</b>	PPIB peptidylprolyl isomerase B [ Homo sapiens (human) ]
<b>Official Symbol</b>	PPIB
<b>Synonyms</b>	PPIB; peptidylprolyl isomerase B (cyclophilin B); peptidyl-prolyl cis-trans isomerase B; CYPB; OI9; PPIase B; rotamase B; S-cyclophilin; cyclophilin-like protein; SCYLP; CYP-S1; MGC2224; MGC14109;
<b>Gene ID</b>	5479
<b>mRNA Refseq</b>	NM_000942
<b>Protein Refseq</b>	NP_000933
<b>MIM</b>	123841
<b>UniProt ID</b>	P23284

 Tel: 1-631-559-9269 1-516-512-3133

 Email: [info@creative-biomart.com](mailto:info@creative-biomart.com)  Fax: 1-631-938-8127

 45-1 Ramsey Road, Shirley, NY 11967, USA

**Reducing 4%-20%  
SDS-PAGE (CBB  
stained) and WB  
(Anti-His Mouse  
Monoclonal  
antibody) analysis  
profiles of purified  
PPIB.**



1. PPIB
2. BSA

 Tel: 1-631-559-9269 1-516-512-3133

 Email: [info@creative-biomart.com](mailto:info@creative-biomart.com)  Fax: 1-631-938-8127

 45-1 Ramsey Road, Shirley, NY 11967, USA