

# Recombinant Human PPIB Protein, Myc/DDK-tagged, C13 and N15-labeled

**Cat. No.** PPIB-2244H    **Lot. No.** (See product label)

## SPECIFICATION

<b>Product Overview</b>	PPIB MS Standard C13 and N15-labeled recombinant protein (NP_000933) with a C-terminal MYC/DDK tag, was expressed in HEK293 cells.
<b>Species</b>	Human
<b>Source</b>	HEK293
<b>Description</b>	The protein encoded by this gene is a cyclosporine-binding protein and is mainly located within the endoplasmic reticulum. It is associated with the secretory pathway and released in biological fluids. This protein can bind to cells derived from T- and B-lymphocytes, and may regulate cyclosporine A-mediated immunosuppression. Variants have been identified in this protein that give rise to recessive forms of osteogenesis imperfecta.
<b>Molecular Mass</b>	23.7 kDa
<b>AA Sequence</b>	MLRLSERNMKVLAAALIAGSVFFLLLPGPSAADEKKKGPKVTVKVYFDLRIGDEDVGRVIFGLFGKTVPKTVDNFVALATGEKGFYKNSKFHRVIKDFMIQGGDFTRGDGTGGKSIYGERFPDENFKLKHYGPGWVSMANAGKDTNGSQFFITTVKTAWLDGKHVVFVKVLEGMVVVRKVESTKTDSRDKPLKDVIIADCGKIEVEKPFIAIAKETRTRPLEQKLISEEDLAANDILDYKDDDDKV
<b>Purity</b>	> 80% as determined by SDS-PAGE and Coomassie blue staining

 Tel: 1-631-559-9269    1-516-512-3133

 Email: [info@creative-biomart.com](mailto:info@creative-biomart.com)     Fax: 1-631-938-8127

 45-1 Ramsey Road, Shirley, NY 11967, USA

<b>Stability</b>	Stable for 3 months from receipt of products under proper storage and handling conditions.
<b>Storage</b>	Store at -80 centigrade. Avoid repeated freeze-thaw cycles.
<b>Concentration</b>	50 µg/mL as determined by BCA
<b>Storage Buffer</b>	100 mM glycine, 25 mM Tris-HCl, pH 7.3.

## GENE INFORMATION

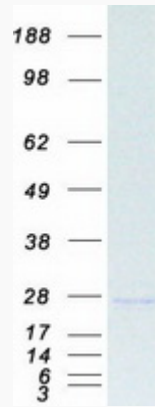
<b>Gene Name</b>	PPIB peptidylprolyl isomerase B [ Homo sapiens (human) ]
<b>Official Symbol</b>	PPIB
<b>Synonyms</b>	PPIB; peptidylprolyl isomerase B (cyclophilin B); peptidyl-prolyl cis-trans isomerase B; CYPB; OI9; PPIase B; rotamase B; S-cyclophilin; cyclophilin-like protein; SCYLP; CYP-S1; MGC2224; MGC14109;
<b>Gene ID</b>	5479
<b>mRNA Refseq</b>	NM_000942
<b>Protein Refseq</b>	NP_000933
<b>MIM</b>	123841
<b>UniProt ID</b>	P23284

 Tel: 1-631-559-9269 1-516-512-3133

 Email: [info@creative-biomart.com](mailto:info@creative-biomart.com)  Fax: 1-631-938-8127

 45-1 Ramsey Road, Shirley, NY 11967, USA

**SDS-PAGE**



 Tel: 1-631-559-9269 1-516-512-3133

 Email: [info@creative-biomart.com](mailto:info@creative-biomart.com)  Fax: 1-631-938-8127

 45-1 Ramsey Road, Shirley, NY 11967, USA