

Recombinant Cattle PPIB Protein, His-tagged

Cat. No. PPIB-264C Lot. No. (See product label)

SPECIFICATION

Product Overview	Recombinant Cattle PPIB(Tyr47~Glu216) fused with His tag at N-terminal was expressed in E. coli.
Species	Cattle
Source	E.coli
ProteinLength	Tyr47~Glu216
Description	PPIB played an important role in many functions.
Form	PBS, pH7.4, containing 0.01% SKL, 1mM DTT, 5% Trehalose and Proclin300.
Molecular Mass	22.41kDa
Identity	Reconstitute in PBS or others
Endotoxin	<1.0EU per 1g (determined by the LAL method)
Purity	> 95%
Applications	Positive Control; Immunogen; SDS-PAGE; WB. If bio-activity of the protein is needed, please check active protein
Stability	The thermal stability is described by the loss rate. The loss rate was determined by

 Tel: 1-631-559-9269 1-516-512-3133

 Email: info@creative-biomart.com  Fax: 1-631-938-8127

 45-1 Ramsey Road, Shirley, NY 11967, USA

accelerated thermal degradation test, that is, incubate the protein at 37 centigrade for 48h, and no obvious degradation and precipitation were observed. The loss rate is less than 5% within the expiration date under appropriate storage condition.

Storage

Avoid repeated freeze/thaw cycles. Store at 2-8 centigrade for one month. Aliquot and store at -80 centigrade for 12 months.

Reconstitution

Reconstitute in PBS or others

GENE INFORMATION

Gene Name

PPIB peptidylprolyl isomerase B [*Bos taurus*]

Official Symbol

PPIB

Synonyms

PPlase B; S-cyclophilin; SCYLP; cyclophilin B; peptidylprolyl isomerase B (cyclophilin B); rotamase B

Gene ID

281419

mRNA Refseq

NM_174152

Protein Refseq

NP_776577

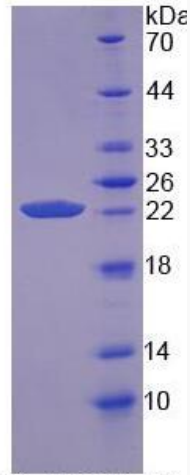
UniProt ID

P80311

 Tel: 1-631-559-9269 1-516-512-3133

 Email: info@creative-biomart.com  Fax: 1-631-938-8127

 45-1 Ramsey Road, Shirley, NY 11967, USA



15% SDS-PAGE

Tel: 1-631-559-9269 1-516-512-3133

Email: info@creative-biomart.com Fax: 1-631-938-8127

45-1 Ramsey Road, Shirley, NY 11967, USA