

Recombinant Human PPIB protein, His-tagged

Cat. No. PPIB-652H Lot. No. (See product label)

SPECIFICATION

Product Overview	Recombinant Human PPIB protein(NP_000933.1) (Asp 34-Ala 212) was expressed in HEK293, fused with a signal peptide at the N-terminus and a polyhistidine tag at the C-terminus.
Species	Human
Source	HEK293
ProteinLength	34-212 aa
Form	Lyophilized from sterile PBS, pH 7.4.
Molecular Mass	The recombinant human PPIB consists of 190 amino acids and migrates as an approximately 22 kDa band in SDS-PAGE under reducing conditions as predicted.
Endotoxin	< 1.0 EU per µg of the protein as determined by the LAL method.
Purity	> 96 % as determined by SDS-PAGE
Storage	Store it under sterile conditions at -20°C to -80°C upon receiving. Recommend to aliquot the protein into smaller quantities for optimal storage. Avoid repeated freeze-thaw cycles.
Reconstitution	It is recommended that sterile water be added to the vial to prepare a stock solution of 0.2 ug/ul. Centrifuge the vial at 4°C before opening to recover the entire contents.

 Tel: 1-631-559-9269 1-516-512-3133

 Email: info@creative-biomart.com  Fax: 1-631-938-8127

 45-1 Ramsey Road, Shirley, NY 11967, USA

protein Refseq-Weblink http://www.ncbi.nlm.nih.gov/protein/NP_000933.1

Unit ID P23284

Unit ID-Weblink <http://www.uniprot.org/uniprot/P23284>

GENE INFORMATION

Gene Name PPIB peptidylprolyl isomerase B (cyclophilin B) [Homo sapiens]

Official Symbol PPIB

Synonyms PPIB; peptidylprolyl isomerase B (cyclophilin B); peptidyl-prolyl cis-trans isomerase B; CYPB; OI9; PPlase B; rotamase B; S-cyclophilin; cyclophilin-like protein; SCYLP; CYP-S1; MGC2224; MGC14109;

Gene ID 5479

mRNA Refseq [NM_000942](#)

protein Refseq NP_000933

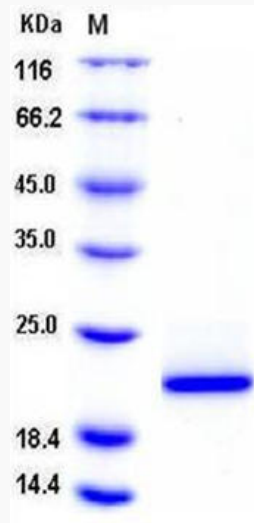
MIM 123841

 Tel: 1-631-559-9269 1-516-512-3133

 Email: info@creative-biomart.com  Fax: 1-631-938-8127

 45-1 Ramsey Road, Shirley, NY 11967, USA

SDS-PAGE



 Tel: 1-631-559-9269 1-516-512-3133

 Email: info@creative-biomart.com  Fax: 1-631-938-8127

 45-1 Ramsey Road, Shirley, NY 11967, USA