

Recombinant Human PPM1A Protein, Myc/DDK-tagged, C13 and N15-labeled

Cat. No. PPM1A-4860H Lot. No. (See product label)

SPECIFICATION

Product Overview

PPM1A MS Standard C13 and N15-labeled recombinant protein (NP_066283) with a C-terminal MYC/DDK tag, was expressed in HEK293 cells.

Species

Human

Source

HEK293

Description

The protein encoded by this gene is a member of the PP2C family of Ser/Thr protein phosphatases. PP2C family members are known to be negative regulators of cell stress response pathways. This phosphatase dephosphorylates, and negatively regulates the activities of, MAP kinases and MAP kinase kinases. It has been shown to inhibit the activation of p38 and JNK kinase cascades induced by environmental stresses. This phosphatase can also dephosphorylate cyclin-dependent kinases, and thus may be involved in cell cycle control. Overexpression of this phosphatase is reported to activate the expression of the tumor suppressor gene TP53/p53, which leads to G2/M cell cycle arrest and apoptosis. Three alternatively spliced transcript variants encoding distinct isoforms have been described.

Molecular Mass

42.4 kDa

AA Sequence

MGAFLDKPKMEKHNAQQGNGRLRYGLSSMQGWVEMEDAHTAVIGLPSGLESWS
FFAVYDGHAGSQVAKYCCEHLLDHITNNQDFKGSAGAPSVENVKNGIRTGFLEIDEH
MRVMSEKKHGADRSGSTAVGVLISPQHTYFINGDSRGLLCRNKRVHFFTQDHKPS

 Tel: 1-631-559-9269 1-516-512-3133

 Email: info@creative-biomart.com  Fax: 1-631-938-8127

 45-1 Ramsey Road, Shirley, NY 11967, USA

NPLEKERIQNAGGSVMIQRVNGSLAVSRALGDFDYKCVHKGKGPTEQLVSPEPEVHD
 IERSEEDDQFIILACDGIWDVMGNEELCDFVRSRLEVTDDELEKVCNEVVDTCCLYKGS
 RDNMSVILICFPNAPKVSPEAVKKEAELDKYLECRVEEIIKKQGEGVPDLVHVMRTLA
 SENIPSLPPGGELASKRNVIEAVYNRLNPNYKNDTDTSTSTDDMWTRTRPLEQKLISE
 EDLAANDILDYKDDDDKV

Purity > 80% as determined by SDS-PAGE and Coomassie blue staining

Stability Stable for 3 months from receipt of products under proper storage and handling conditions.

Storage Store at -80 centigrade. Avoid repeated freeze-thaw cycles.

Concentration 50 µg/mL as determined by BCA

Storage Buffer 100 mM glycine, 25 mM Tris-HCl, pH 7.3.

GENE INFORMATION

Gene Name PPM1A protein phosphatase, Mg²⁺/Mn²⁺ dependent 1A [Homo sapiens (human)]

Official Symbol PPM1A

Synonyms PPM1A; protein phosphatase, Mg²⁺/Mn²⁺ dependent, 1A; protein phosphatase 1A (formerly 2C), magnesium dependent, alpha isoform; protein phosphatase 1A; MGC9201; phosphatase 2C alpha; PP2CA; PP2Calpha; protein phosphatase 2C; alpha isoform; protein phosphatase 1A (formerly 2C), magnesium-dependent, alpha isoform; PP2C-ALPHA; FLJ42306;

Gene ID 5494

 Tel: 1-631-559-9269 1-516-512-3133

 Email: info@creative-biomart.com  Fax: 1-631-938-8127

 45-1 Ramsey Road, Shirley, NY 11967, USA

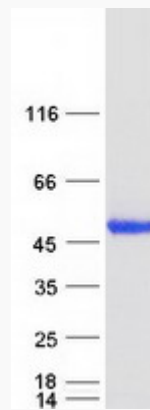
mRNA Refseq [NM_021003](#)

Protein Refseq [NP_066283](#)

MIM [606108](#)

UniProt ID [P35813](#)

SDS-PAGE



 Tel: 1-631-559-9269 1-516-512-3133

 Email: info@creative-biomart.com  Fax: 1-631-938-8127

 45-1 Ramsey Road, Shirley, NY 11967, USA