

Recombinant Human PPM1A protein, His-tagged

Cat. No. PPM1A-5288H Lot. No. (See product label)

SPECIFICATION

Product Overview	Recombinant Human PPM1A protein(P35813)(397aa), fused with N-terminal His tag, was expressed in E. coli.
Species	Human
Source	E.coli
Protein Length	397aa(including fusion tag)
Tag	N-His
Form	20mM Tris.Cl, 50mM NaCl, 50% Glycerol, pH8.0.
Molecular Mass	44.4kDa(including fusion tag)
Storage	Store at -80°C and avoid repeated freeze-thaw cycles.
Reconstitution	It is recommended that sterile water be added to the vial to prepare a stock solution of 0.2 ug/ul. Centrifuge the vial at 4°C before opening to recover the entire contents.

GENE INFORMATION

Gene Name	PPM1A protein phosphatase, Mg ²⁺ /Mn ²⁺ dependent, 1A [Homo sapiens]
Official Symbol	PPM1A

 Tel: 1-631-559-9269 1-516-512-3133

 Email: info@creative-biomart.com  Fax: 1-631-938-8127

 45-1 Ramsey Road, Shirley, NY 11967, USA

Synonyms PPM1A; protein phosphatase, Mg²⁺/Mn²⁺ dependent, 1A; protein phosphatase 1A (formerly 2C), magnesium dependent, alpha isoform; protein phosphatase 1A; MGC9201; phosphatase 2C alpha; PP2CA; PP2Calpha; protein phosphatase 2C; alpha isoform; protein phosphatase 1A (formerly 2C), magnesium-dependent, alpha isoform; PP2C-ALPHA; FLJ42306;

Gene ID [5494](#)

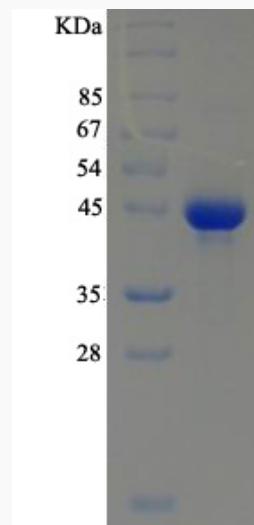
mRNA Refseq [NM_021003](#)

Protein Refseq [NP_066283](#)

MIM [606108](#)

UniProt ID [P35813](#)

SDS-PAGE



 Tel: 1-631-559-9269 1-516-512-3133

 Email: info@creative-biomart.com  Fax: 1-631-938-8127

 45-1 Ramsey Road, Shirley, NY 11967, USA