

Recombinant Human PPM1A Protein (Gly2-Trp382), C-His tagged

Cat. No. PPM1A-5955H Lot. No. (See product label)

SPECIFICATION

Product Overview	Recombinant human PPM1A (Gly2-Trp382) fused with the C-terminal His tag was expressed in E. coli.
Species	Human
Source	E.coli
ProteinLength	Gly2-Trp382
Form	Lyophilized powder/frozen liquid
Molecular Mass	30.8 kDa
Purity	> 90 % as determined by SDS-PAGE
Notes	For research use only.
Storage	Use a manual defrost freezer and avoid repeated freeze thaw cycles. Store at 2 to 8 centigrade for one week. Store at -20 to -80 centigrade for twelve months from the date of receipt.
Storage Buffer	Supplied as solution form in PBS or lyophilized from PBS.
Reconstitution	Reconstitute in sterile water for a stock solution.

 Tel: 1-631-559-9269 1-516-512-3133

 Email: info@creative-biomart.com  Fax: 1-631-938-8127

 45-1 Ramsey Road, Shirley, NY 11967, USA

Shipping They are shipped out with dry ice/blue ice unless customers require otherwise.

GENE INFORMATION

Gene Name PPM1A protein phosphatase, Mg²⁺/Mn²⁺ dependent, 1A [Homo sapiens (human)]

Official Symbol PPM1A

Synonyms PPM1A; protein phosphatase, Mg²⁺/Mn²⁺ dependent, 1A; protein phosphatase 1A (formerly 2C), magnesium dependent, alpha isoform; protein phosphatase 1A; MGC9201; phosphatase 2C alpha; PP2CA; PP2Calpha; protein phosphatase 2C; alpha isoform; protein phosphatase 1A (formerly 2C), magnesium-dependent, alpha isoform; PP2C-ALPHA; FLJ42306;

Gene ID 5494

mRNA Refseq NM_021003

Protein Refseq NP_066283

MIM 606108

UniProt ID P35813

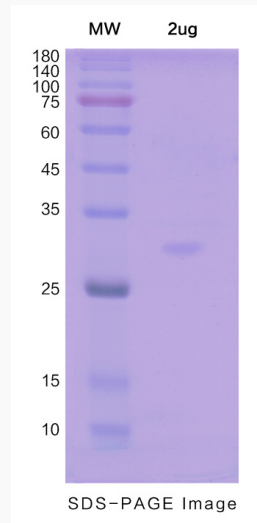
 Tel: 1-631-559-9269 1-516-512-3133

 Email: info@creative-biomart.com  Fax: 1-631-938-8127

 45-1 Ramsey Road, Shirley, NY 11967, USA



SDS-PAGE



Tel: 1-631-559-9269 1-516-512-3133

Email: info@creative-biomart.com Fax: 1-631-938-8127

45-1 Ramsey Road, Shirley, NY 11967, USA