

# Active Recombinant Full Length Human PPM1G Protein, C-Flag-tagged

Cat. No. PPM1G-560HFL    Lot. No. (See product label)

## SPECIFICATION

<b>Product Overview</b>	Recombinant Full Length Human PPM1G Protein, fused to Flag-tag at C-terminus, was expressed in Mammalian cells.
<b>Species</b>	Human
<b>Source</b>	Mammalian Cells
<b>Description</b>	The protein encoded by this gene is a member of the PP2C family of Ser/Thr protein phosphatases. PP2C family members are known to be negative regulators of cell stress response pathways. This phosphatase is found to be responsible for the dephosphorylation of Pre-mRNA splicing factors, which is important for the formation of functional spliceosome. Studies of a similar gene in mice suggested a role of this phosphatase in regulating cell cycle progression.
<b>Form</b>	25 mM Tris HCl, pH 7.3, 100 mM glycine, 10% glycerol.
<b>Bio-activity</b>	In vitro phosphatase assay
<b>Molecular Mass</b>	59.1 kDa
<b>AA Sequence</b>	MGAYLSQPNTVKCSGDGVGAPRLPLPYGFSAMQGWRVSMEDAHNCIPELDSETA MFSVYDGHGGEEVALY CAKYLPDIKDQKAYKEGKLQKALEDAFLAIDAKLTTEEVK ELAQIAGRPTEDEDEKEKVADEDDVDNE EAALLHEEATMTIEELLTRYGQNCHKGP PHSKSGGGTGEEPGSQGLNGEAGPEDSTRETSPQENGPTAKA YTGFSNSERGT

 Tel: 1-631-559-9269    1-516-512-3133

 Email: [info@creative-biomart.com](mailto:info@creative-biomart.com)     Fax: 1-631-938-8127

 45-1 Ramsey Road, Shirley, NY 11967, USA

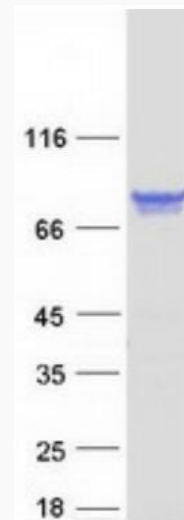
EAGQVGEPGIPTGEAGPSCSSASDKLPRVAKSKFFEDSEDESDEAEEDSEECSECS  
 EE EDGYSSEEAENEDEDDTEEAEEDEEEEEEMMVPGMEGKEEPGSDSGTTAV  
 VALIRGKQLIVANAGDSR CUVSEAGKALDMSYDHPKPEDEVELARIKNAGGKVTMDG  
 RVNGGLNLSRAIGDHFYKRNKNLPPEEQMISA LPDIKVLTLTDDHEFMVIACDGIWN  
 VMSSQEVVDFIQSKISQRDENGELRLLSSIVEELLDQCLAPDTSG  
 DGTGCDNMTCIIICFKPRNTAELQPESGKRKLEEVVLSSTEGAEENGNSDKKKKAKRDT  
 RTRPLEQKLISEEDLAANDILDYKDDDDKV

<b>Purity</b>	> 80% as determined by SDS-PAGE and Coomassie blue staining.
<b>Stability</b>	Stable for 12 months from the date of receipt of the product under proper storage and handling conditions. Avoid repeated freeze-thaw cycles.
<b>Storage</b>	Store at -80 centigrade.
<b>Concentration</b>	>50 ug/mL as determined by microplate BCA method.
<b>Preparation</b>	Recombinant protein was captured through anti-DDK affinity column followed by conventional chromatography steps.
<b>Protein Families</b>	Druggable Genome, Phosphatase
<b>Full Length</b>	Full L.

## GENE INFORMATION

<b>Gene Name</b>	PPM1G protein phosphatase, Mg <sup>2+</sup> /Mn <sup>2+</sup> dependent 1G [ Homo sapiens (human) ]
<b>Official Symbol</b>	PPM1G
<b>Synonyms</b>	PP2CG; PPP2CG; PP2CGAMMA

Gene ID	5496
mRNA Refseq	NM_177983.3
Protein Refseq	NP_817092.1
MIM	605119
UniProt ID	O15355



Coomassie blue staining of purified PPM1G protein.

Tel: 1-631-559-9269 1-516-512-3133

Email: [info@creative-biomart.com](mailto:info@creative-biomart.com) Fax: 1-631-938-8127

45-1 Ramsey Road, Shirley, NY 11967, USA