

Recombinant Human PPM1G Protein (Met317-Asp546), C-His tagged


Cat. No. PPM1G-5956H Lot. No. (See product label)

SPECIFICATION

Product Overview	Recombinant human PPM1G (Met317-Asp546) fused with the C-terminal His tag was expressed in E. coli.
Species	Human
Source	E.coli
ProteinLength	Met317-Asp546
Form	Lyophilized powder/frozen liquid
Molecular Mass	18.7 kDa
Purity	> 90 % as determined by SDS-PAGE
Notes	For research use only.
Storage	Use a manual defrost freezer and avoid repeated freeze thaw cycles. Store at 2 to 8 centigrade for one week. Store at -20 to -80 centigrade for twelve months from the date of receipt.
Storage Buffer	Supplied as solution form in PBS or lyophilized from PBS.
Reconstitution	Reconstitute in sterile water for a stock solution.

 Tel: 1-631-559-9269 1-516-512-3133

 Email: info@creative-biomart.com  Fax: 1-631-938-8127

 45-1 Ramsey Road, Shirley, NY 11967, USA

Shipping They are shipped out with dry ice/blue ice unless customers require otherwise.

GENE INFORMATION

Gene Name PPM1G protein phosphatase, Mg²⁺/Mn²⁺ dependent, 1G [Homo sapiens (human)]

Official Symbol PPM1G

Synonyms

PPM1G; protein phosphatase, Mg²⁺/Mn²⁺ dependent, 1G; protein phosphatase 1G (formerly 2C), magnesium dependent, gamma isoform; protein phosphatase 1G; PP2C; gamma; PP2CG; PP2Cgamma; protein phosphatase 2C; gamma isoform; PP2C-gamma; PP2C, gamma; protein phosphatase 1C; protein phosphatase 2C gamma isoform; protein phosphatase 2C isoform gamma; protein phosphatase magnesium-dependent 1 gamma; protein phosphatase 2, catalytic subunit, gamma isoform; protein phosphatase 1G (formerly 2C), magnesium-dependent, gamma isoform; PPP2CG; PP2CGAMMA; MGC1675; MGC2870;

Gene ID 5496

mRNA Refseq NM_177983


Protein Refseq NP_817092

MIM 605119

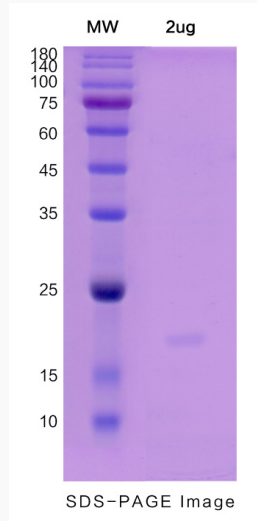
UniProt ID O15355


 Tel: 1-631-559-9269 1-516-512-3133

 Email: info@creative-biomart.com  Fax: 1-631-938-8127


 45-1 Ramsey Road, Shirley, NY 11967, USA

SDS-PAGE



 Tel: 1-631-559-9269 1-516-512-3133

 Email: info@creative-biomart.com  Fax: 1-631-938-8127

 45-1 Ramsey Road, Shirley, NY 11967, USA