

## Recombinant Human PPP1R12B Protein, Myc/DDK-tagged, C13 and N15-labeled

**Cat. No.** PPP1R12B-5145H    **Lot. No.** (See product label)

### SPECIFICATION

<b>Product Overview</b>	PPP1R12B MS Standard C13 and N15-labeled recombinant protein (NP_115287) with a C-terminal MYC/DDK tag, was expressed in HEK293 cells.
<b>Species</b>	Human
<b>Source</b>	HEK293
<b>Description</b>	Myosin phosphatase is a protein complex comprised of three subunits: a catalytic subunit (PP1c-delta, protein phosphatase 1, catalytic subunit delta), a large regulatory subunit (MYPT, myosin phosphatase target) and small regulatory subunit (sm-M20). Two isoforms of MYPT have been isolated--MYPT1 and MYPT2, the first of which is widely expressed, and the second of which may be specific to heart, skeletal muscle, and brain. Each of the MYPT isoforms functions to bind PP1c-delta and increase phosphatase activity. This locus encodes both MYTP2 and M20. Alternatively spliced transcript variants encoding different isoforms have been identified. Related pseudogenes have been defined on the Y chromosome.
<b>Molecular Mass</b>	26.1 kDa
<b>AA Sequence</b>	MDKNENEEADLDEQSSKRLSIRERRRRPKERRRRGTGINFWTKDEDETDGSEEVKET WHERLSRLESGGSNPTTSDSYGDRASARARREAREARLATLSRVEEDSNRDYKK LYESALTENQKLKTKLQEAQLELADIKSKLEKVAQQKQEKTSRSSHVLEMEKRERRA LERKMSEMEEMKNLHQLKQIQTLKQMNEQLQAENRALTRVVARLSESISSDTQE

 Tel: 1-631-559-9269    1-516-512-3133

 Email: [info@creative-biomart.com](mailto:info@creative-biomart.com)     Fax: 1-631-938-8127

 45-1 Ramsey Road, Shirley, NY 11967, USA



LTRTRPLEQKLISEEDLAANDILDYKDDDDKV

**Purity** > 80% as determined by SDS-PAGE and Coomassie blue staining

**Stability** Stable for 3 months from receipt of products under proper storage and handling conditions.

**Storage** Store at -80 centigrade. Avoid repeated freeze-thaw cycles.

**Concentration** 50 µg/mL as determined by BCA

**Storage Buffer** 100 mM glycine, 25 mM Tris-HCl, pH 7.3.

## GENE INFORMATION

**Gene Name** [PPP1R12B protein phosphatase 1 regulatory subunit 12B \[ Homo sapiens \(human\) \]](#)

**Official Symbol** [PPP1R12B](#)

**Synonyms** PPP1R12B; protein phosphatase 1 regulatory subunit 12B; MYPT2; PP1bp55; protein phosphatase 1 regulatory subunit 12B; myosin phosphatase target subunit 2; myosin phosphatase-targeting subunit 2; protein phosphatase 1, regulatory (inhibitor) subunit 12B; EC 3.1.3.53

**Gene ID** [4660](#)

**mRNA Refseq** [NM\\_032104](#)

**Protein Refseq** [NP\\_115287](#)

**MIM** [603768](#)

Tel: 1-631-559-9269 1-516-512-3133

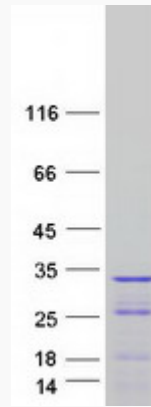
Email: [info@creative-biomart.com](mailto:info@creative-biomart.com) Fax: 1-631-938-8127

45-1 Ramsey Road, Shirley, NY 11967, USA

UniProt ID

O60237

SDS-PAGE



 Tel: 1-631-559-9269 1-516-512-3133

 Email: [info@creative-biomart.com](mailto:info@creative-biomart.com)  Fax: 1-631-938-8127

 45-1 Ramsey Road, Shirley, NY 11967, USA