

Recombinant Human PPP1R1B Protein (1-168 aa), GST-tagged

Cat. No. PPP1R1B-2118H Lot. No. (See product label)

SPECIFICATION

Product Overview	Recombinant Human PPP1R1B Protein (1-168 aa) is produced by E. coli expression system. This protein is fused with a GST tag at the N-terminal. Research Area: Neuroscience. Protein Description: Full Length of Isoform 2.
Species	Human
Source	E.coli
ProteinLength	1-168 aa
Description	Inhibitor of protein-phosphatase 1.
Form	Tris-based buffer,50% glycerol
Molecular Mass	45.7 kDa
AA Sequence	MLFRLSEHSSPEEEASPHQRASGEGHHLKSKRPNPCAYTPPSLKAVQRIAESHLQSI SNLNENQASEEDELGELRELGYPREEDEEEEEEDDEEEEEEDDSQAEVLKVIRQSA GQKTTGCGGLEGPWERPPLDESERDGGSEDQVEDPALSEPGEEPQRPSPEPG T
Purity	> 90% as determined by SDS-PAGE.
Notes	Repeated freezing and thawing is not recommended. Store working aliquots at 4 centigrade for up to one week.

 Tel: 1-631-559-9269 1-516-512-3133

 Email: info@creative-biomart.com  Fax: 1-631-938-8127

 45-1 Ramsey Road, Shirley, NY 11967, USA

Storage The shelf life is related to many factors, storage state, buffer ingredients, storage temperature and the stability of the protein itself. Generally, the shelf life of liquid form is 6 months at -20 centigrade/-80 centigrade. The shelf life of lyophilized form is 12 months at -20 centigrade/-80 centigrade.

Concentration A hardcopy of COA will be sent along with the products. Please refer to it for detailed information.

GENE INFORMATION

Gene Name PPP1R1B protein phosphatase 1, regulatory (inhibitor) subunit 1B (dopamine and cAMP regulated phosphoprotein, DARPP-32) [Homo sapiens]

Official Symbol PPP1R1B

Synonyms PPP1R1B; DARPP 32; FLJ20940; DARPP-32;

Gene ID 5503

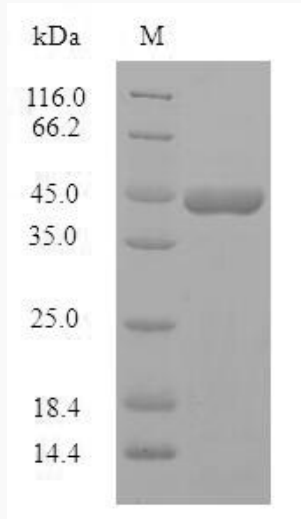
MIM 604399

UniProt ID Q9UD71

 Tel: 1-631-559-9269 1-516-512-3133

 Email: info@creative-biomart.com  Fax: 1-631-938-8127

 45-1 Ramsey Road, Shirley, NY 11967, USA



(Tris-Glycine gel) Discontinuous SDS-PAGE (reduced) with 5% enrichment gel and 15% separation gel.

 Tel: 1-631-559-9269 1-516-512-3133

 Email: info@creative-biomart.com  Fax: 1-631-938-8127

 45-1 Ramsey Road, Shirley, NY 11967, USA