

Recombinant Human PPP1R1B Protein, Myc/DDK-tagged, C13 and N15-labeled

Cat. No. PPP1R1B-5038H **Lot. No.** (See product label)

SPECIFICATION

Product Overview	PPP1R1B MS Standard C13 and N15-labeled recombinant protein (NP_852606) with a C-terminal MYC/DDK tag, was expressed in HEK293 cells.
Species	Human
Source	HEK293
Description	This gene encodes a bifunctional signal transduction molecule. Dopaminergic and glutamatergic receptor stimulation regulates its phosphorylation and function as a kinase or phosphatase inhibitor. As a target for dopamine, this gene may serve as a therapeutic target for neurologic and psychiatric disorders. Multiple transcript variants encoding different isoforms have been found for this gene.
Molecular Mass	18.7 kDa
AA Sequence	MLFRLSEHSSPEEEASPHQRASGEGHHLKSKRPNPCAYTPPSLKAVQRIAESHLQSI SNLNENQASEEEDELGELRELGYPREEDEEEEEEDDEEEEEEDSQAENVLKVIRQSA GQKTTGCGGLEGPWERPPPLDESERDGGSEDQVEDPALSEPGEEPQRPSPSEPG TTRTRPLEQKLISEEDLAANDILDYKDDDDKV
Purity	> 80% as determined by SDS-PAGE and Coomassie blue staining
Stability	Stable for 3 months from receipt of products under proper storage and handling conditions.

 Tel: 1-631-559-9269 1-516-512-3133

 Email: info@creative-biomart.com  Fax: 1-631-938-8127

 45-1 Ramsey Road, Shirley, NY 11967, USA

Storage	Store at -80 centigrade. Avoid repeated freeze-thaw cycles.
Concentration	50 µg/mL as determined by BCA
Storage Buffer	100 mM glycine, 25 mM Tris-HCl, pH 7.3.

GENE INFORMATION

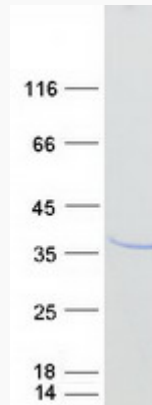
Gene Name	PPP1R1B protein phosphatase 1 regulatory inhibitor subunit 1B [Homo sapiens (human)]
Official Symbol	PPP1R1B
Synonyms	PPP1R1B; protein phosphatase 1, regulatory (inhibitor) subunit 1B (dopamine and cAMP regulated phosphoprotein, DARPP-32); DARPP 32; dopamine and cAMP regulated phosphoprotein; FLJ20940; DARPP-32;
Gene ID	84152
mRNA Refseq	NM_181505
Protein Refseq	NP_852606
MIM	604399
UniProt ID	Q9UD71

 Tel: 1-631-559-9269 1-516-512-3133

 Email: info@creative-biomart.com  Fax: 1-631-938-8127

 45-1 Ramsey Road, Shirley, NY 11967, USA

SDS-PAGE



 Tel: 1-631-559-9269 1-516-512-3133

 Email: info@creative-biomart.com  Fax: 1-631-938-8127

 45-1 Ramsey Road, Shirley, NY 11967, USA