

# Recombinant Human PPP1R3G Protein, Myc/DDK-tagged, C13 and N15-labeled

**Cat. No.** PPP1R3G-1839H    **Lot. No.** (See product label)

## SPECIFICATION

<b>Product Overview</b>	PPP1R3G MS Standard C13 and N15-labeled recombinant protein (NP_001138587) with a C-terminal MYC/DDK tag, was expressed in HEK293 cells.
<b>Species</b>	Human
<b>Source</b>	HEK293
<b>Description</b>	Glycogen-targeting subunit for protein phosphatase 1 (PP1). Involved in the regulation of hepatic glycogenesis in a manner coupled to the fasting-feeding cycle and distinct from other glycogen-targeting subunits.
<b>Molecular Mass</b>	37.8 kDa
<b>AA Sequence</b>	MEPIGARLSLEAPGPAPFREAPPAAEELPAPVPCVQGGDGGGASETSPSDAQLG DRPLSPKEEAAPQEQUEELLECRRCRARSFSLPADPILQAAKFLQQQQQVAVALGG EGAEDAQLGPGGCCAKCKKRVQFADTLGLSLASVKHFSEAEPPQVPPAVLSRLRSF PMRAEDLEQLGGLLAAAAVAAPLSAPPSRLRPLFQLPGPSAAAERLQRQRVCLERV QCSTASGAIEVKGSGRVLSCPGPRAVTVRYTFTEWRSFLDVPALQPEPLEPQQPE APSGASEPGSGDAKKEPGAECFHFSLCLPPGLQPEDEEDADERGVAVHFAVCYRC AQGEYWDNNAGANYTLRYARPADALTRTRPLEQKLISEEDLAANDILDYKDDDDKV
<b>Purity</b>	> 80% as determined by SDS-PAGE and Coomassie blue staining
<b>Stability</b>	Stable for 3 months from receipt of products under proper storage and handling

 Tel: 1-631-559-9269    1-516-512-3133

 Email: [info@creative-biomart.com](mailto:info@creative-biomart.com)     Fax: 1-631-938-8127

 45-1 Ramsey Road, Shirley, NY 11967, USA

conditions.

**Storage** Store at -80 centigrade. Avoid repeated freeze-thaw cycles.

**Concentration** 50 µg/mL as determined by BCA

**Storage Buffer** 100 mM glycine, 25 mM Tris-HCl, pH 7.3.

## GENE INFORMATION

**Gene Name** PPP1R3G protein phosphatase 1 regulatory subunit 3G [ Homo sapiens (human) ]

**Official Symbol** PPP1R3G

**Synonyms** PPP1R3G; protein phosphatase 1, regulatory subunit 3G; protein phosphatase 1, regulatory (inhibitor) subunit 3G; putative protein phosphatase 1 regulatory inhibitor subunit 3G;

**Gene ID** 648791

**mRNA Refseq** NM\_001145115

**Protein Refseq** NP\_001138587

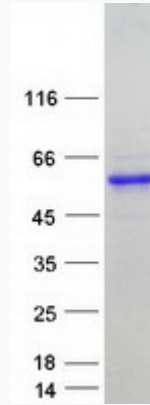
**UniProt ID** B7ZBB8

 Tel: 1-631-559-9269 1-516-512-3133

 Email: [info@creative-biomart.com](mailto:info@creative-biomart.com)  Fax: 1-631-938-8127

 45-1 Ramsey Road, Shirley, NY 11967, USA

**SDS-PAGE**



 Tel: 1-631-559-9269 1-516-512-3133

 Email: [info@creative-biomart.com](mailto:info@creative-biomart.com)  Fax: 1-631-938-8127

 45-1 Ramsey Road, Shirley, NY 11967, USA