

Recombinant Human PPP2CA Protein, Full Length, N-GST tagged

Cat. No. PPP2CA-50H **Lot. No.** (See product label)

SPECIFICATION

Product Overview	Recombinant full-length human PP2A alpha was expressed by baculovirus in Sf9 insect cells using an N-terminal GST tag.
Species	Human
Source	Sf9 Cells
ProteinLength	Full Length
Description	This gene encodes the phosphatase 2A catalytic subunit. Protein phosphatase 2A is one of the four major Ser/Thr phosphatases, and it is implicated in the negative control of cell growth and division. It consists of a common heteromeric core enzyme, which is composed of a catalytic subunit and a constant regulatory subunit, that associates with a variety of regulatory subunits. This gene encodes an alpha isoform of the catalytic subunit.
Molecular Mass	59 kDa
Storage	Store product at –70 centigrade. For optimal storage, aliquot target into smaller quantities after centrifugation and store at recommended temperature. For most favorable performance, avoid repeated handling and multiple freeze/thaw cycles.
References	1. Van Hoof, C. et.al: Structure and chromosomal localization of the human gene of the phosphotyrosyl phosphatase activator (PTPA) of protein phosphatase 2A.

 Tel: 1-631-559-9269 1-516-512-3133

 Email: info@creative-biomart.com  Fax: 1-631-938-8127

 45-1 Ramsey Road, Shirley, NY 11967, USA

Genomics 28: 261-272, 1995.

2. Chao, Y. et.al: Structure and mechanism of the phosphotyrosyl phosphatase activator. Molec. Cell 23: 535-546, 2006.

GENE INFORMATION

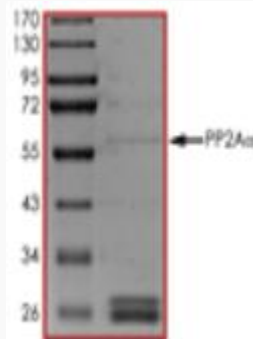
Gene Name	PPP2CA protein phosphatase 2 catalytic subunit alpha [Homo sapiens (human)]
Official Symbol	PPP2CA
Synonyms	PPP2CA; protein phosphatase 2 catalytic subunit alpha; HJS3; RP-C; PP2Ac; PP2CA; NEDLBA; PP2Calpha; serine/threonine-protein phosphatase 2A catalytic subunit alpha isoform; PP2A-alpha; protein phosphatase 2, catalytic subunit, alpha isozyme; replication protein C; EC 3.1.3.16; serine/threonine-protein phosphatase 2A 65 kDa regulatory subunit A alpha isoform; Names; medium tumor antigen-associated 61 KDA protein; protein phosphatase 2, regulatory subunit A, alpha; testicular secretory protein Li 1; EC 3.1.3.16; PPP2R1A; protein phosphatase 2 scaffold subunit Aalpha; HJS2; MRD36; PP2AA; PR65A; PP2AAALPHA; PP2A-Aalpha
Gene ID	5515
mRNA Refseq	NM_002715
Protein Refseq	NP_002706
MIM	176915
UniProt ID	P05323

 Tel: 1-631-559-9269 1-516-512-3133

 Email: info@creative-biomart.com  Fax: 1-631-938-8127

 45-1 Ramsey Road, Shirley, NY 11967, USA

SDS-PAGE



 Tel: 1-631-559-9269 1-516-512-3133

 Email: info@creative-biomart.com  Fax: 1-631-938-8127

 45-1 Ramsey Road, Shirley, NY 11967, USA