

Recombinant Full Length Human PPP2CA Protein, C-Flag-tagged

Cat. No. PPP2CA-577HFL **Lot. No.** (See product label)

SPECIFICATION

| | |
|-------------------------|----------------------------------------------------------------------------------------------------------------------------------------------------------------------------------------------------------------------------------------------------------------------------------------------------------------------------------------------------------------------------------------------------------------------------------------------------------|
| Product Overview | Recombinant Full Length Human PPP2CA Protein, fused to Flag-tag at C-terminus, was expressed in Mammalian cells. |
| Species | Human |
| Source | Mammalian Cells |
| Description | This gene encodes the phosphatase 2A catalytic subunit. Protein phosphatase 2A is one of the four major Ser/Thr phosphatases, and it is implicated in the negative control of cell growth and division. It consists of a common heteromeric core enzyme, which is composed of a catalytic subunit and a constant regulatory subunit, that associates with a variety of regulatory subunits. This gene encodes an alpha isoform of the catalytic subunit. |
| Form | 25 mM Tris HCl, pH 7.3, 100 mM glycine, 10% glycerol. |
| Molecular Mass | 35.4 kDa |
| AA Sequence | MDEKVFTKELDQWIEQLNECKQLSESQVKSLCEKAKEILTKESNVQEVRCPTVCG DVHGQFHDLMELFR IGGKSPDTNYLFMGDYVDRGYYSVETVLLVALKVRYRERITI LRGNHESRQITQVYGFYDECLRKYGNA NVWKYFTDLFDYLPLTALVDGQIFCLHGG LSPSIDTLDHIRALDRLQVEVPHEGPMCDLLWSDPDDRGGWG ISPRGAGYTFGQDIS ETFNHANGLTLVSRHQLVMEGYNWCHDRNVVTIFSAPNYCYRCGNQAAIMELDD TLKYSFLQFDPAPRRGEPHVTRRTPDYFLTRTRPLEQKLISEEDLAANDILDYKDDDD |

 Tel: 1-631-559-9269 1-516-512-3133

 Email: info@creative-biomart.com  Fax: 1-631-938-8127

 45-1 Ramsey Road, Shirley, NY 11967, USA

| | |
|-------------------------|-----------------------------------------------------------------------------------------------------------------------------------------------|
| | KV |
| Purity | > 80% as determined by SDS-PAGE and Coomassie blue staining. |
| Stability | Stable for 12 months from the date of receipt of the product under proper storage and handling conditions. Avoid repeated freeze-thaw cycles. |
| Storage | Store at -80 centigrade. |
| Concentration | >50 ug/mL as determined by microplate BCA method. |
| Preparation | Recombinant protein was captured through anti-DDK affinity column followed by conventional chromatography steps. |
| Protein Families | Druggable Genome, Phosphatase, Transcription Factors |
| Protein Pathways | Long-term depression, Oocyte meiosis, TGF-beta signaling pathway, Tight junction, Wnt signaling pathway |
| Full Length | Full L. |
| GENE INFORMATION | |
| Gene Name | PPP2CA protein phosphatase 2 catalytic subunit alpha [Homo sapiens (human)] |
| Official Symbol | PPP2CA |
| Synonyms | RP-C; PP2Ac; PP2CA; NEDLBA; PP2Calpha |
| Gene ID | 5515 |

 Tel: 1-631-559-9269 1-516-512-3133

 Email: info@creative-biomart.com  Fax: 1-631-938-8127

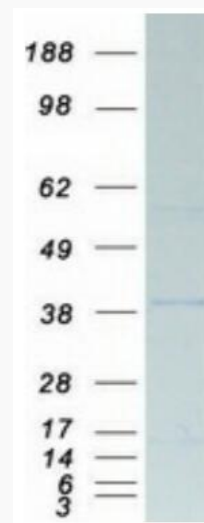
 45-1 Ramsey Road, Shirley, NY 11967, USA

mRNA Refseq [NM_002715.4](#)

Protein Refseq [NP_002706.1](#)

MIM [176915](#)

UniProt ID [P67775](#)



Coomassie blue staining of purified PPP2CA protein.

 Tel: 1-631-559-9269 1-516-512-3133

 Email: info@creative-biomart.com  Fax: 1-631-938-8127

 45-1 Ramsey Road, Shirley, NY 11967, USA