

Recombinant Human PPP2CB Protein (1-309 aa), GST-tagged

Cat. No. PPP2CB-1178H Lot. No. (See product label)

SPECIFICATION

Product Overview	Recombinant Human PPP2CB Protein (1-309 aa) is produced by E. coli expression system. This protein is fused with a GST tag at the N-terminal. Research Area: Signal Transduction. Protein Description: Full Length.
Species	Human
Source	E.coli
ProteinLength	1-309 aa
Description	PP2A can modulate the activity of phosphorylase B kinase casein kinase 2, mitogen-stimulated S6 kinase, and MAP-2 kinase.
Form	Tris-based buffer,50% glycerol
Molecular Mass	62.6 kDa
AA Sequence	MDDKAFTKELDQWVEQLNECKQLNENQVRTLCEKAKEILTKESNVQEVRCPVTVCG DVHGQFHDLMELFRIGGKSPDTNYLFMGDYVDRGYYSVETVLLVALKVRYPERITIL RGNHESRQITQVYGFYDECLRKYGNANVWKYFTDLFDYLPLTALVDGQIFCLHGGL SPSIDTLDHIRALDRLQVEVPHEGPMCDLLWSDPDDRGGWGISPRGAGYTFGQDISE TFNHANGLTLVSRHQLVMEGYNWCHDRNVVTIFSAPNYCYRCGNQAAIMELDDTL KYSFLQFDPAPRRGEPHVTRRTPDYFL
Purity	> 90% as determined by SDS-PAGE.

 Tel: 1-631-559-9269 1-516-512-3133

 Email: info@creative-biomart.com  Fax: 1-631-938-8127

 45-1 Ramsey Road, Shirley, NY 11967, USA

Notes	Repeated freezing and thawing is not recommended. Store working aliquots at 4 centigrade for up to one week.
Storage	The shelf life is related to many factors, storage state, buffer ingredients, storage temperature and the stability of the protein itself. Generally, the shelf life of liquid form is 6 months at -20 centigrade/-80 centigrade. The shelf life of lyophilized form is 12 months at -20 centigrade/-80 centigrade.
Concentration	A hardcopy of COA with reconstitution instruction is sent along with the products. Please refer to it for detailed information.

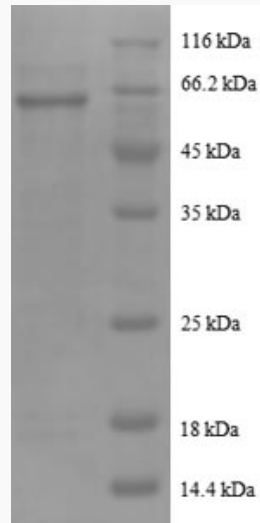
GENE INFORMATION

Gene Name	PPP2CB protein phosphatase 2, catalytic subunit, beta isozyme [Homo sapiens]
Official Symbol	PPP2CB
Synonyms	PPP2CB; PP2Abeta; beta isoform; PP2A-beta; PP2CB;
Gene ID	5516
mRNA Refseq	NM_001009552
Protein Refseq	NP_001009552
MIM	176916
UniProt ID	P62714

 Tel: 1-631-559-9269 1-516-512-3133

 Email: info@creative-biomart.com  Fax: 1-631-938-8127

 45-1 Ramsey Road, Shirley, NY 11967, USA



(Tris-Glycine gel) Discontinuous SDS-PAGE (reduced) with 5% enrichment gel and 15% separation gel.

 Tel: 1-631-559-9269 1-516-512-3133

 Email: info@creative-biomart.com  Fax: 1-631-938-8127

 45-1 Ramsey Road, Shirley, NY 11967, USA