

Recombinant Human PPP2R2B Protein, GST-tagged

Cat. No. PPP2R2B-01H Lot. No. (See product label)

SPECIFICATION

Product Overview Human PPP2R2B full-length ORF (AAH31790, 1 a.a. - 443 a.a.) recombinant protein with GST-tag at N-terminal was expressed in wheat germ.

Species Human

Source Wheat Germ

Description The product of this gene belongs to the phosphatase 2 regulatory subunit B family. Protein phosphatase 2 is one of the four major Ser/Thr phosphatases, and it is implicated in the negative control of cell growth and division. It consists of a common heteromeric core enzyme, which is composed of a catalytic subunit and a constant regulatory subunit, that associates with a variety of regulatory subunits. The B regulatory subunit might modulate substrate selectivity and catalytic activity. This gene encodes a beta isoform of the regulatory subunit B55 subfamily. Defects in this gene cause autosomal dominant spinocerebellar ataxia 12 (SCA12), a disease caused by degeneration of the cerebellum, sometimes involving the brainstem and spinal cord, and in resulting in poor coordination of speech and body movements. Multiple alternatively spliced variants, which encode different isoforms, have been identified for this gene. The 5' UTR of some of these variants includes a CAG trinucleotide repeat sequence (7-28 copies) that can be expanded to 66-78 copies in cases of SCA12.

Molecular Mass 74.25 kDa

 Tel: 1-631-559-9269 1-516-512-3133

 Email: info@creative-biomart.com  Fax: 1-631-938-8127

 45-1 Ramsey Road, Shirley, NY 11967, USA

AA Sequence

MEEDIDTRKINNSFLRDHSYATEADIISTVEFNHTGELLATGDKGGRVVIFQREQESK
 NQVHRRGEYNVYSTFQSHEPEFDYLKSLEIEEKINKIRWLPQQNAAYFLLSTNDKTV
 KLWKVSERDKRPEGYNLKDEEGRLRDPATITTLRVPVLRPMDLMVEATPRRVFANA
 HTYHINSISVNSDYETYMSADDLRINLWNFEITNQSFNIVDIKPANMEELTEVITAAEF
 HPHHCNTFVYSSSKGTIRLCDMRASALCDRHTKFFEEPEDPSNRSFFSEIISSISDVK
 FSHSGRYIMTRDYLTVKVWDLNMENRPIETYQVHDYLRSLKLSLYENDCIFDKFECV
 WNGSDSVIMTGSYNNFFRMFDRNTKRDTVLEASRENSKPRAILKPRKVCVGGKRRK
 DEISVDSLDFSKILHTAWHPSENIIVAATNNLYIFQDKVN

Applications

Enzyme-linked Immunoabsorbent Assay
 Western Blot (Recombinant protein)
 Antibody Production
 Protein Array

Storage Store at -80 centigrade. Aliquot to avoid repeated freezing and thawing.

Storage Buffer 50 mM Tris-HCl, 10 mM reduced Glutathione, pH=8.0 in the elution buffer.

GENE INFORMATION

Gene Name [PPP2R2B protein phosphatase 2 regulatory subunit Bbeta \[Homo sapiens \(human\) \]](#)

Official Symbol [PPP2R2B](#)

Synonyms

PPP2R2B; protein phosphatase 2 regulatory subunit Bbeta; PR52B; SCA12;
 B55BETA; PR55BETA; PP2ABBETA; PP2APR55B; PR2ABBETA; PR55-BETA;
 PP2AB55BETA; PR2AB55BETA; PP2APR55BETA; PR2APR55BETA;
 serine/threonine-protein phosphatase 2A 55 kDa regulatory subunit B beta isoform;
 PP2A subunit B isoform B55-beta; PP2A subunit B isoform PR55-beta; PP2A subunit
 B isoform R2-beta; PP2A, subunit B, B-beta isoform; protein phosphatase 2 (formerly

 Tel: 1-631-559-9269 1-516-512-3133

 Email: info@creative-biomart.com  Fax: 1-631-938-8127

 45-1 Ramsey Road, Shirley, NY 11967, USA

2A), regulatory subunit B (PR 52), beta isoform; protein phosphatase 2 (formerly 2A), regulatory subunit B, beta isoform; protein phosphatase 2, regulatory subunit B, beta; serine/threonine protein phosphatase 2A, 55 kDa regulatory subunit B, beta isoform; serine/threonine protein phosphatase 2A, neuronal isoform; EC 3.1.3.16

Gene ID 5521

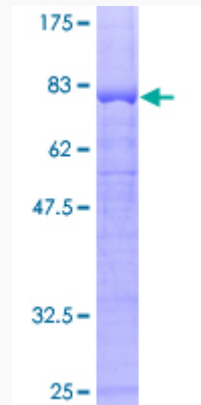
mRNA Refseq NM_181674

Protein Refseq NP_858060

MIM 604325

UniProt ID Q00005

Quality Control Testing



12.5% SDS-PAGE Stained with Coomassie Blue.

 Tel: 1-631-559-9269 1-516-512-3133

 Email: info@creative-biomart.com  Fax: 1-631-938-8127

 45-1 Ramsey Road, Shirley, NY 11967, USA