

## Recombinant Human PPP2R2B protein, His&Myc-tagged

Cat. No. PPP2R2B-5322H Lot. No. (See product label)

### SPECIFICATION

<b>Product Overview</b>	Recombinant Human PPP2R2B protein(Q00005)(1-443aa), fused with N-terminal His tag and C-terminal Myc tag, was expressed in E.coli.
<b>Species</b>	Human
<b>Source</b>	E.coli
<b>ProteinLength</b>	1-443aa
<b>Form</b>	If the delivery form is liquid, the default storage buffer is Tris/PBS-based buffer, 5%-50% glycerol. If the delivery form is lyophilized powder, the buffer before lyophilization is Tris/PBS-based buffer, 6% Trehalose, pH 8.0.
<b>Molecular Mass</b>	56.7 kDa
<b>Purity</b>	Greater than 85% as determined by SDS-PAGE.
<b>Storage</b>	Store at -20°C/-80°C upon receipt, aliquoting is necessary for mutiple use. Avoid repeated freeze-thaw cycles.
<b>Reconstitution</b>	We recommend that this vial be briefly centrifuged prior to opening to bring the contents to the bottom. Please reconstitute protein in deionized sterile water to a concentration of 0.1-1.0 mg/mL. We recommend to add 5-50% of glycerol (final concentration) and aliquot for long-term storage at -20°C/-80°C.

 Tel: 1-631-559-9269 1-516-512-3133

 Email: [info@creative-biomart.com](mailto:info@creative-biomart.com)  Fax: 1-631-938-8127

 45-1 Ramsey Road, Shirley, NY 11967, USA

**AA Sequence**

MEEDIDTRKINNSFLRDHSYATEADIISTVEFNHTGELLATGDKGGRVVIFQREQESK  
 NQVHRRGEYNVYSTFQSHEPEFDYLSLEIEEKINKIRWLPQQNAAYFLLSTNDKTV  
 KLWKVSERDKRPEGYNLKDEEGRLRDPATITTLRVPVLRPMDLMVEATPRRVFANA  
 HTYHINSISVNSDYETYMSADDLRINLWNFEITNQSFNIVDIKPANMEELTEVITAAEF  
 HPHHCNTFVYSSSKGTIRLCDMRASALCDRHTKFFEEPEDPSNRSFFSEIISSISDVK  
 FSHSGRYIMTRDYLTVKVWDLNMENRPIETYQVHDYLRSKLCSLYENDCIFDKFECV  
 WNGSDSVIMTGSYNNFFRMFDRNTKRDVTLEASRENSKPRAILKPRKVCVGGKRRK  
 DEISVDSLDFSKILHTAWHPSENIIVAATNNLYIFQDKVN

**GENE INFORMATION**

**Gene Name** [PPP2R2B protein phosphatase 2, regulatory subunit B, beta \[ Homo sapiens \]](#)

**Official Symbol** [PPP2R2B](#)

**Synonyms**

PPP2R2B; protein phosphatase 2, regulatory subunit B, beta; protein phosphatase 2 (formerly 2A), regulatory subunit B (PR 52), beta isoform , protein phosphatase 2 (formerly 2A), regulatory subunit B, beta isoform , SCA12, spinocerebellar ataxia 12; serine/threonine-protein phosphatase 2A 55 kDa regulatory subunit B beta isoform; PP2A subunit B isoform beta; PR52B; PR55 BETA; PP2A subunit B isoform R2-beta; PP2A subunit B isoform B55-beta; PP2A, subunit B, B-beta isoform; PP2A subunit B isoform PR55-beta; serine/threonine protein phosphatase 2A, neuronal isoform; protein phosphatase 2 (formerly 2A), regulatory subunit B, beta isoform; protein phosphatase 2 (formerly 2A), regulatory subunit B (PR 52), beta isoform; serine/threonine protein phosphatase 2A, 55 kDa regulatory subunit B, beta isoform; SCA12; B55BETA; PR55BETA; PP2ABBETA; PP2APR55B; PR2ABBETA; PR55-BETA; PP2AB55BETA; PR2AB55BETA; PP2APR55BETA; PR2APR55BETA; FLJ95686; MGC24888;

**Gene ID** [5521](#)

 Tel: 1-631-559-9269 1-516-512-3133

 Email: [info@creative-biomart.com](mailto:info@creative-biomart.com)  Fax: 1-631-938-8127

 45-1 Ramsey Road, Shirley, NY 11967, USA

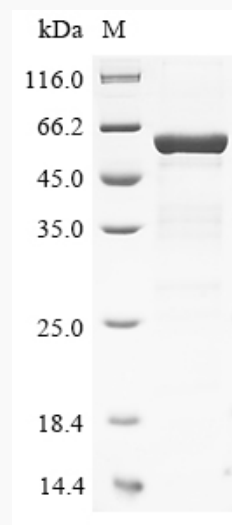
mRNA Refseq [NM\\_001127381](#)

Protein Refseq [NP\\_001120853](#)

MIM [604325](#)

UniProt ID [Q00005](#)

**SDS-PAGE**



 Tel: 1-631-559-9269 1-516-512-3133

 Email: [info@creative-biomart.com](mailto:info@creative-biomart.com)  Fax: 1-631-938-8127

 45-1 Ramsey Road, Shirley, NY 11967, USA