

Recombinant Human PPP3CC Protein (2-512 aa), His-tagged

Cat. No. PPP3CC-736H Lot. No. (See product label)

SPECIFICATION

Product Overview	Recombinant Human PPP3CC Protein (2-512 aa) is produced by E. coli expression system. This protein is fused with a 6xHis tag at the N-terminal. Research Area: Signal Transduction. Protein Description: Partial.
Species	Human
Source	E.coli
ProteinLength	2-512 aa
Description	Calcium-dependent, calmodulin-stimulated protein phosphatase. This subunit may have a role in the calmodulin activation of calcineurin.
Form	Tris-based buffer, 50% glycerol
Molecular Mass	62.0 kDa
AA Sequence	SGRRFHLSTTDRVIKAVPFPPTQRLTFKEVFENGKPKVDVLKNHLVKEGRLEEEVAL KIINDGAAILRQEKTMI EVDAPITVCGDIHGQFFDLMKLFVGGSPSNTRYLFLGDYVD RGYFSIECVLYLWLSLKINHPKTLFLLRGNHECRHLTDYFTFKQECRIKYSEQVYDAC METFDCLPLAALLNQQLFCVHGGMSPEITSLDDIRKLDRFTEPPAFGPVCDLLWSDP SEDYGNEKTLEHYHTHTVIRGCSYFYSPAVCEFLQNNLLSIIRAHEAQDAGYRMY RKSQATGFPSLITIFSAPNYLDVYNNKAAVLKYENNVMNIRQFNCSHPYWLPNFMD VFTWSLFPVGEKVTEMLVNLNICSDDDELISDDEAEGSTTVRKEIIRNKIRAIGKMARV FSILRQESVLTLLKGLTPTGTLPLGVLSGGKQTIETATVEAVEAREAIRGFSLQHKIR

 Tel: 1-631-559-9269 1-516-512-3133

 Email: info@creative-biomart.com  Fax: 1-631-938-8127

 45-1 Ramsey Road, Shirley, NY 11967, USA

SFEEARGLDRINERMPPRKDSIHAGGPMKSVTSAHSHAAHRSDQGKKAHS

Purity > 90% as determined by SDS-PAGE.

Notes Repeated freezing and thawing is not recommended. Store working aliquots at 4 centigrade for up to one week.

Storage The shelf life is related to many factors, storage state, buffer ingredients, storage temperature and the stability of the protein itself. Generally, the shelf life of liquid form is 6 months at -20 centigrade/-80 centigrade. The shelf life of lyophilized form is 12 months at -20 centigrade/-80 centigrade.

Concentration A hardcopy of COA with concentration instruction is sent along with the products.

GENE INFORMATION

Gene Name [PPP3CC protein phosphatase 3, catalytic subunit, gamma isozyme \[Homo sapiens \]](#)

Official Symbol [PPP3CC](#)

Synonyms PPP3CC; CALNA3; PP2Bgamma; CNA3;

Gene ID [5533](#)

mRNA Refseq [NM_001243974](#)

Protein Refseq [NP_001230903](#)

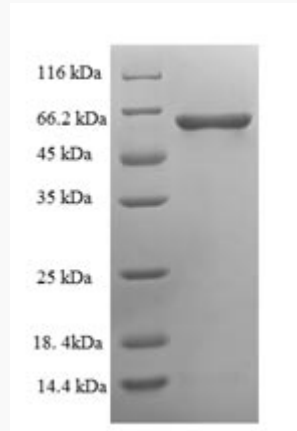
MIM [114107](#)

UniProt ID [P48454](#)

 Tel: 1-631-559-9269 1-516-512-3133

 Email: info@creative-biomart.com  Fax: 1-631-938-8127

 45-1 Ramsey Road, Shirley, NY 11967, USA



(Tris-Glycine gel) Discontinuous SDS-PAGE (reduced) with 5% enrichment gel and 15% separation gel.

 Tel: 1-631-559-9269 1-516-512-3133

 Email: info@creative-biomart.com  Fax: 1-631-938-8127

 45-1 Ramsey Road, Shirley, NY 11967, USA