

Recombinant Human PPP3R1 protein, GST-tagged

Cat. No. PPP3R1-1923H Lot. No. (See product label)

SPECIFICATION

Product Overview	Recombinant Human PPP3R1 protein(1-170 aa), fused with N-terminal GST tag, was expressed in E. coli.
Species	Human
Source	E. coli
ProteinLength	1-170 aa
Form	The purified protein was lyophilized from sterile phosphate-buffered saline (PBS: 58 mM Na ₂ HPO ₄ , 17 mM NaH ₂ PO ₄ , 68 mM NaCl, pH 8.0). Prior to lyophilization, 5% (w/v) trehalose and 5% (w/v) mannitol were incorporated as cryoprotective excipients. The protein was eluted with a buffer containing 100 mM reduced glutathione (GSH).
AASequence	MGNEASYPLEMCSHFDADEIKRLGKRFKLDLDNSGSLSVVEEFMSLPELQQNPLVQ RVIDIFDTGNGEVDVDFKEFIEGVSQFSVKGDKEQKLRFAFRIYDMDKDGYSISNGELFQ VLKMMVGNLKDQLQIQVDKTIINADKDGDRISFEEFCVVGGGLDIHKMVDV
Purity	90%, by SDS-PAGE.
Storage	Store at 2-8°C for 1-2 weeks. Aliquot and store at -20°C to -80°C for up to 3 months, reconstitution with sterile water and addition of an equal volume of glycerol. Avoid repeat freeze-thaw cycles.

 Tel: 1-631-559-9269 1-516-512-3133

 Email: info@creative-biomart.com  Fax: 1-631-938-8127

 45-1 Ramsey Road, Shirley, NY 11967, USA

Reconstitution It is recommended that sterile water be added to the vial to prepare a stock solution of 0.25 ug/ul. Centrifuge the vial at 4°C before opening to recover the entire contents.

GENE INFORMATION

Gene Name [PPP3R1 protein phosphatase 3, regulatory subunit B, alpha \[Homo sapiens \]](#)

Official Symbol [PPP3R1](#)

Synonyms PPP3R1; protein phosphatase 3, regulatory subunit B, alpha; protein phosphatase 3 (formerly 2B), regulatory subunit B (19kD), alpha isoform (calcineurin B, type I) , protein phosphatase 3 (formerly 2B), regulatory subunit B, 19kDa, alpha isoform (calcineurin B, type I) , protein phosphatase 3 (formerly 2B), regulatory subunit B, alpha isoform; calcineurin subunit B type 1; calcineurin B; type I (19kDa); CALNB1; CNB; CNB1; protein phosphatase 2B regulatory subunit B alpha; calcineurin B, type I (19kDa); protein phosphatase 2B regulatory subunit 1; protein phosphatase 3 (formerly 2B), regulatory subunit B, alpha isoform; protein phosphatase 3 (formerly 2B), regulatory subunit B (19kD), alpha isoform (calcineurin B, type I); protein phosphatase 3 (formerly 2B), regulatory subunit B, 19kDa, alpha isoform (calcineurin B, type I);

mRNA Refseq [NM_000945](#)

Protein Refseq [NP_000936](#)

MIM [601302](#)

UniProt ID [P63098](#)

Gene ID [5534](#)

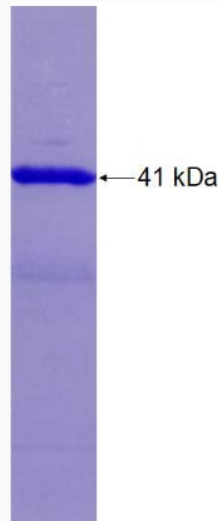
 Tel: 1-631-559-9269 1-516-512-3133

 Email: info@creative-biomart.com  Fax: 1-631-938-8127

 45-1 Ramsey Road, Shirley, NY 11967, USA



SDS-PAGE



Tel: 1-631-559-9269 1-516-512-3133

Email: info@creative-biomart.com Fax: 1-631-938-8127

45-1 Ramsey Road, Shirley, NY 11967, USA