

Recombinant Human PPP3R1 Protein (Gly2-Val170), N-GST tagged

Cat. No. PPP3R1-5969H Lot. No. (See product label)

SPECIFICATION

Product Overview	Recombinant human PPP3R1 (Gly2-Val170) fused with the N-GST tag was expressed in E. coli.
Species	Human
Source	E.coli
ProteinLength	Gly2-Val170
Form	Lyophilized powder/frozen liquid
Molecular Mass	46.01 kDa
Purity	> 90 % as determined by SDS-PAGE
Notes	For research use only.
Storage	Use a manual defrost freezer and avoid repeated freeze thaw cycles. Store at 2 to 8 centigrade for one week. Store at -20 to -80 centigrade for twelve months from the date of receipt.
Storage Buffer	0.01M PBS, pH 7.4, 0.02 % NLS
Reconstitution	Reconstitute in sterile water for a stock solution.

 Tel: 1-631-559-9269 1-516-512-3133

 Email: info@creative-biomart.com  Fax: 1-631-938-8127

 45-1 Ramsey Road, Shirley, NY 11967, USA

Shipping

They are shipped out with dry ice/blue ice unless customers require otherwise.

GENE INFORMATION

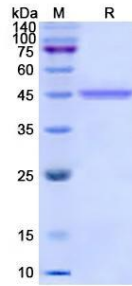
Gene Name	PPP3R1 protein phosphatase 3, regulatory subunit B, alpha [Homo sapiens (human)]
Official Symbol	PPP3R1
Synonyms	PPP3R1; protein phosphatase 3, regulatory subunit B, alpha; protein phosphatase 3 (formerly 2B), regulatory subunit B (19kD), alpha isoform (calcineurin B, type I), protein phosphatase 3 (formerly 2B), regulatory subunit B, 19kDa, alpha isoform (calcineurin B, type I), protein phosphatase 3 (formerly 2B), regulatory subunit B, alpha isoform; calcineurin subunit B type 1; calcineurin B; type I (19kDa); CALNB1; CNB; CNB1; protein phosphatase 2B regulatory subunit B alpha; calcineurin B, type I (19kDa); protein phosphatase 2B regulatory subunit 1; protein phosphatase 3 (formerly 2B), regulatory subunit B, alpha isoform; protein phosphatase 3 (formerly 2B), regulatory subunit B (19kD), alpha isoform (calcineurin B, type I); protein phosphatase 3 (formerly 2B), regulatory subunit B, 19kDa, alpha isoform (calcineurin B, type I);
Gene ID	5534
mRNA Refseq	NM_000945
Protein Refseq	NP_000936
MIM	601302
UniProt ID	P63098

 Tel: 1-631-559-9269 1-516-512-3133

 Email: info@creative-biomart.com  Fax: 1-631-938-8127

 45-1 Ramsey Road, Shirley, NY 11967, USA

SDS-PAGE



 Tel: 1-631-559-9269 1-516-512-3133

 Email: info@creative-biomart.com  Fax: 1-631-938-8127

 45-1 Ramsey Road, Shirley, NY 11967, USA