

Recombinant Human PPP3R2 Protein, Myc/DDK-tagged, C13 and N15-labeled

Cat. No. PPP3R2-1848H **Lot. No.** (See product label)

SPECIFICATION

Product Overview	PPP3R2 MS Standard C13 and N15-labeled recombinant protein (NP_671709) with a C-terminal MYC/DDK tag, was expressed in HEK293 cells.
Species	Human
Source	HEK293
Description	Regulatory subunit of calcineurin, a calcium-dependent, calmodulin stimulated protein phosphatase. Confers calcium sensitivity.
Molecular Mass	19.9 kDa
AA Sequence	MSTMGNEASYPAEMC SHFDNDEIKRLGRRFKKLDL DKSGLSVEEFMSLPELRHNP LVRRVIDVFDTGDGGEVDFKEFILGTSQFSVKGDEEQKLRFAFSIYDMDKDGYSNG ELFQVLKMMVGNNLTDWQLQQLVDKTIILDKDGDGKISFEFSAVVRDLEIHKKLVLI VTRTRPLEQKLISEEDLAANDILDYKDDDDKV
Purity	> 80% as determined by SDS-PAGE and Coomassie blue staining
Stability	Stable for 3 months from receipt of products under proper storage and handling conditions.
Storage	Store at -80 centigrade. Avoid repeated freeze-thaw cycles.

 Tel: 1-631-559-9269 1-516-512-3133

 Email: info@creative-biomart.com  Fax: 1-631-938-8127

 45-1 Ramsey Road, Shirley, NY 11967, USA

Concentration 50 µg/mL as determined by BCA

Storage Buffer 100 mM glycine, 25 mM Tris-HCl, pH 7.3.

GENE INFORMATION

Gene Name PPP3R2 protein phosphatase 3 regulatory subunit B, beta [Homo sapiens (human)]

Official Symbol PPP3R2

Synonyms

PPP3R2; protein phosphatase 3, regulatory subunit B, beta; protein phosphatase 3 (formerly 2B), regulatory subunit B (19kD), beta isoform (calcineurin B, type II), protein phosphatase 3 (formerly 2B), regulatory subunit B, 19kDa, beta isoform (calcineurin B, type II), protein phosphatase 3 (formerly 2B), regulatory subunit B, beta isoform; calcineurin subunit B type 2; calcineurin B; type II (19kDa); PPP3RL; protein phosphatase 2B regulatory subunit 2; protein phosphatase 3; regulatory subunit B (calcineurin B) like; CBLP; CNBII; calcineurin BII; calcineurin B-like protein; calcineurin B, type II (19kDa); protein phosphatase 3 regulatory subunit B beta isoform; protein phosphatase 3 (formerly 2B), regulatory subunit B, beta isoform; protein phosphatase 3 (formerly 2B), regulatory subunit B (19kD), beta isoform (calcineurin B, type II); protein phosphatase 3 (formerly 2B), regulatory subunit B, 19kDa, beta isoform (calcineurin B, type II);

Gene ID 5535

mRNA Refseq NM_147180

Protein Refseq NP_671709

MIM 613821

 Tel: 1-631-559-9269 1-516-512-3133

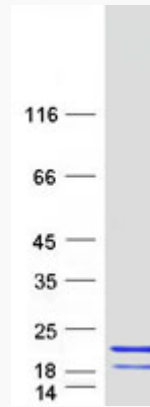
 Email: info@creative-biomart.com  Fax: 1-631-938-8127

 45-1 Ramsey Road, Shirley, NY 11967, USA

UniProt ID

Q96LZ3

SDS-PAGE



 Tel: 1-631-559-9269 1-516-512-3133

 Email: info@creative-biomart.com  Fax: 1-631-938-8127

 45-1 Ramsey Road, Shirley, NY 11967, USA