

Recombinant Human PRADC1 Protein (His22-Trp188), C-His-tagged

Cat. No. PRADC1-0048H Lot. No. (See product label)

SPECIFICATION

| | |
|-------------------------|---|
| Product Overview | Recombinant human PRADC1 (His22-Trp188) was fused with the C-terminal His tag and was expressed in Mammalian cells. |
| Species | Human |
| Source | Mammalian Cells |
| ProteinLength | His22-Trp188 |
| Form | Lyophilized powder/frozen liquid |
| Molecular Mass | 18.37 kDa |
| Purity | >90% as determined by SDS-PAGE |
| Notes | For research use only. |
| Storage | Use a manual defrost freezer and avoid repeated freeze thaw cycles. Store at 2 to 8 centigrade for one week. Store at -20 to -80 centigrade for twelve months from the date of receipt. |
| Storage Buffer | Supplied as solution form in PBS or lyophilized from PBS. |
| Reconstitution | Reconstitute in sterile water for a stock solution. |

 Tel: 1-631-559-9269 1-516-512-3133

 Email: info@creative-biomart.com  Fax: 1-631-938-8127

 45-1 Ramsey Road, Shirley, NY 11967, USA

Shipping They are shipped out with dry ice/blue ice unless customers require otherwise.

GENE INFORMATION

Gene Name PRADC1 protease-associated domain containing 1 [Homo sapiens (human)]

Official Symbol PRADC1

Synonyms C2orf7; hPAP21; MGC13004; PADC1_HUMAN; PAP21; Pradc1; Protease associated domain containing 1; Protease-associated domain-containing protein 1; Protease-associated domain-containing protein of 21 kDa; PRADC1

Gene ID 84279

mRNA Refseq NM_032319

Protein Refseq NP_115695

MIM 619674

UniProt ID Q9BSG0

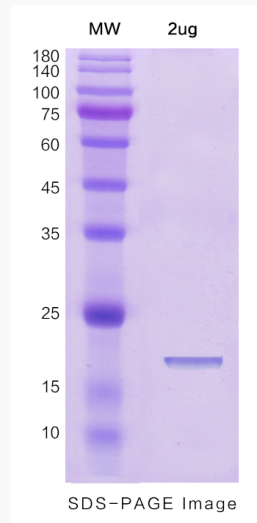
 Tel: 1-631-559-9269 1-516-512-3133

 Email: info@creative-biomart.com  Fax: 1-631-938-8127

 45-1 Ramsey Road, Shirley, NY 11967, USA



SDS-PAGE



Tel: 1-631-559-9269 1-516-512-3133

Email: info@creative-biomart.com Fax: 1-631-938-8127

45-1 Ramsey Road, Shirley, NY 11967, USA