

Recombinant Human PRADC1 Protein, Myc/DDK-tagged, C13 and N15-labeled

Cat. No. PRADC1-2315H Lot. No. (See product label)

SPECIFICATION

Product Overview	C2orf7 MS Standard C13 and N15-labeled recombinant protein (NP_115695) with a C-terminal MYC/DDK tag, was expressed in HEK293 cells.
Species	Human
Source	HEK293
Description	Plays a role in the modulation of physical activity and adiposity.
Molecular Mass	21 kDa
AA Sequence	MVPGAAGWCCLVLWLPACVAAHGFRIHDYLYFQVLSPGDIRYIFTATPAKDFGGIFH TRYEQIHLVPAEPPEACGELSNGFFIQDQIALVERGGCSFLSKTRVVQEHHGRAVIIS DNAVDNDSFYVEMIQDSTQRTADIPALFLLGRDGYMIRRSLEQHGLPWAIISIPVNVV SIPTFELLQPPWTFWTRTRPLEQKLISEEDLAANDILDYKDDDDKV
Purity	> 80% as determined by SDS-PAGE and Coomassie blue staining
Stability	Stable for 3 months from receipt of products under proper storage and handling conditions.
Storage	Store at -80 centigrade. Avoid repeated freeze-thaw cycles.
Concentration	50 µg/mL as determined by BCA

 Tel: 1-631-559-9269 1-516-512-3133

 Email: info@creative-biomart.com  Fax: 1-631-938-8127

 45-1 Ramsey Road, Shirley, NY 11967, USA

Storage Buffer 100 mM glycine, 25 mM Tris-HCl, pH 7.3.

GENE INFORMATION

Gene Name PRADC1 protease-associated domain containing 1 [Homo sapiens (human)]

Official Symbol PRADC1

Synonyms C2orf7; hPAP21; MGC13004; PADC1_HUMAN; PAP21; Pradc1; Protease associated domain containing 1; Protease-associated domain-containing protein 1; Protease-associated domain-containing protein of 21 kDa; PRADC1

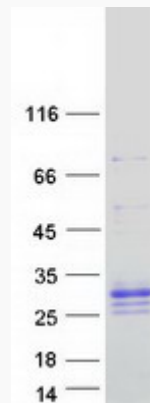
Gene ID 84279

mRNA Refseq NM_032319

Protein Refseq NP_115695

UniProt ID Q9BSG0

SDS-PAGE



 Tel: 1-631-559-9269 1-516-512-3133

 Email: info@creative-biomart.com  Fax: 1-631-938-8127

 45-1 Ramsey Road, Shirley, NY 11967, USA