

Recombinant Human PRAM1 Protein, Myc/DDK-tagged, C13 and N15-labeled

Cat. No. PRAM1-2835H Lot. No. (See product label)

SPECIFICATION

Product Overview

PRAM1 MS Standard C13 and N15-labeled recombinant protein (NP_115528) with a C-terminal MYC/DDK tag, was expressed in HEK293 cells.

Species

Human

Source

HEK293

Description

The protein encoded by this gene is similar to FYN binding protein (FYB/SLAP-130), an adaptor protein involved in T cell receptor mediated signaling. This gene is expressed and regulated during normal myelopoiesis. The expression of this gene is induced by retinoic acid and is inhibited by the expression of PML-RARalpha, a fusion protein of promyelocytic leukemia (PML) and the retinoic acid receptor-alpha (RARalpha).

Molecular Mass

74 kDa

AA Sequence

MAHHLPAAMENHQDFRSIKAKFQASQPEPSDLPKKPPKPEFGKLLKFSQPELSEHP
 KKAPLPEFGAVSLKPPPPEVTDLPKKPPPPEVTDLPKKPPPPEVTDLPKKPPPPEVT
 DLPPKPSKLELSDLSKKFPQLGATPFPRKPLQPEVGEAPLKASLPEPGAPARKPLQP
 DELSHPARPPSEPKSGAFPRKLWQPEAGEATPRSPQPELSTFPKKAQPEFNVYPK
 KPPQPQVGGPLPKKSVQPEFSEAAQTPLWKQSSSEPKRDSSAFPKKASQPPLSDF
 PKKPPQPELGDLTRTSSEPEVSVLPKRPRPAEFKALSKKPPQPELGGPLRPTSSEPEF
 NSLPRKLLQPERRGPPRKFSQPEPSAVLKRHPQPEFFGDLPKPLPSSASESSLP

Tel: 1-631-559-9269 1-516-512-3133

Email: info@creative-biomart.com Fax: 1-631-938-8127

45-1 Ramsey Road, Shirley, NY 11967, USA

AAVAGFSSRHPLSPGFGAAGTPRWRSGLVHSGGARPGLRPSHPPRRRPLPPASS
 LGHPPAKPPLPPGPVDMQSFRRPSAASIDLRRTRSAAGLHFQDRQPEDIPQVPDEIY
 ELYDDVEPRDDSSPSPKGRDEAPSVQQAARRPPQDPALRKEKDPQPQQLPPMDPK
 LLKQLRKAEKAEREFKFKFEFEIIVVHTKMMIDPNAKTRRGGGKHLGIRRGEILEVI
 EFTSNEEMLCRDPKGKYGYPRTALLPLETEVYDDVDFCDPLENQPLPLGRTRTRP
 LEQKLISEEDLAANDILDYKDDDDKV

Purity	> 80% as determined by SDS-PAGE and Coomassie blue staining
Stability	Stable for 3 months from receipt of products under proper storage and handling conditions.
Storage	Store at -80 centigrade. Avoid repeated freeze-thaw cycles.
Concentration	50 µg/mL as determined by BCA
Storage Buffer	100 mM glycine, 25 mM Tris-HCl, pH 7.3.

GENE INFORMATION

Gene Name	PRAM1 PML-RARA regulated adaptor molecule 1 [Homo sapiens (human)]
Official Symbol	PRAM1
Synonyms	PRAM1; PML-RARA regulated adaptor molecule 1; PML-RARA-regulated adapter molecule 1; PML RAR; PRAM; PML-RARA target gene encoding an Adaptor Molecule-1; PRAM-1; PML-RAR; MGC39864;
Gene ID	84106
mRNA Refseq	NM_032152

 Tel: 1-631-559-9269 1-516-512-3133

 Email: info@creative-biomart.com  Fax: 1-631-938-8127

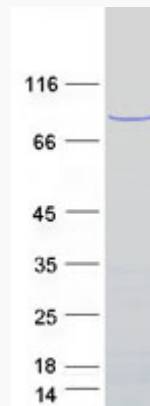
 45-1 Ramsey Road, Shirley, NY 11967, USA

Protein Refseq NP_115528

MIM 606466

UniProt ID Q96QH2

SDS-PAGE



 Tel: 1-631-559-9269 1-516-512-3133

 Email: info@creative-biomart.com  Fax: 1-631-938-8127

 45-1 Ramsey Road, Shirley, NY 11967, USA