

Recombinant Human PRAME Protein

Cat. No. PRAME-01H Lot. No. (See product label)

SPECIFICATION

Product Overview	Recombinant Human PRAME Protein (100-509 aa) was expressed in HEK293.
Species	Human
Source	HEK293
ProteinLength	100-509 aa
Description	This gene encodes an antigen that is preferentially expressed in human melanomas and that is recognized by cytolytic T lymphocytes. It is not expressed in normal tissues, except testis. The encoded protein acts as a repressor of retinoic acid receptor, and likely confers a growth advantage to cancer cells via this function. Alternative splicing results in multiple transcript variants.
AASequence	VLDGLDVLLAQEVRPRRWKLQVLDLRKNSHQDFWTVWSGNRASLYSFPEPEAAQP MTKKRKVDGLSTEAEQPFIPVEVLVDLFLKEGACDELFSYLIEKVKRKKNVLRLLCCKK LKIFAMPMQDIKMILKMQVQLDSIEDLEVTCTWKLPTLAKFSPYLGQMINLRRLLLSHIH ASSYISPEKEEQYIAQFTSQFLSLQCLQALYVDSLFFLRGRLDQLLRHVMNPLETLSIT NCRLSEGDMHLSQSPSVLSVLSLQVMTDVSPEPLQALLERASATLQDLVFD ECGITDDQLLALLPSLSHCSQLTTLSFYGNSSISALQSLQHLIGLSNLTHVLYPVPLE SYEDIHGTLHLERLAYLHARLRELLCELGRPSMVWLSANPCPHCGDRTFYDPEPILC PCFMPN
Molecular Mass	47 kDa

 Tel: 1-631-559-9269 1-516-512-3133

 Email: info@creative-biomart.com  Fax: 1-631-938-8127

 45-1 Ramsey Road, Shirley, NY 11967, USA

Endotoxin	< 1 EU/μg determined by LAL.
Purity	> 90% by SDS-PAGE
Storage	Store it under sterile conditions at -20 to -80 centigrade. It is recommended that the protein be aliquoted for optimal storage. Avoid repeated freeze-thaw cycles.
Concentration	1.2 mg/mL by BCA

GENE INFORMATION

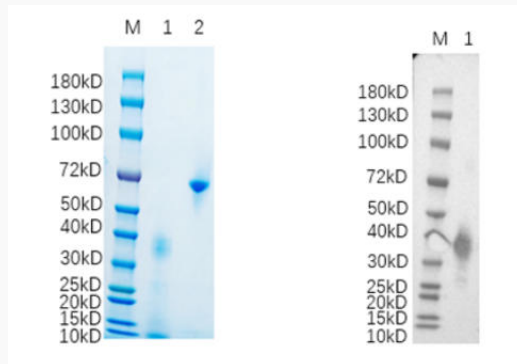
Gene Name	PRAME preferentially expressed antigen in melanoma [Homo sapiens (human)]
Official Symbol	PRAME
Synonyms	PRAME; preferentially expressed antigen in melanoma; MAPE; melanoma antigen preferentially expressed in tumors; cancer/testis antigen 130; CT130; OIP-4; opa-interacting protein 4; Opa-interacting protein OIP4; preferentially expressed antigen of melanoma; OIP4;
Gene ID	23532
mRNA Refseq	NM_006115
Protein Refseq	NP_006106
MIM	606021
UniProt ID	P78395

 Tel: 1-631-559-9269 1-516-512-3133

 Email: info@creative-biomart.com  Fax: 1-631-938-8127

 45-1 Ramsey Road, Shirley, NY 11967, USA

SDS-PAGE and WB



Reducing 4%-20% SDS-PAGE (CBB stained) and WB (Rabbit anti-Homo sapiens (Human) PRAME Polyclonal antibody) analysis profiles of purified PRAME. 1.

PRAME: 1 μ g 2. BSA: 1 μ g

 Tel: 1-631-559-9269 1-516-512-3133

 Email: info@creative-biomart.com  Fax: 1-631-938-8127

 45-1 Ramsey Road, Shirley, NY 11967, USA