

# Recombinant Human PRAME Protein, Tag Free, Biotinylated

Cat. No. PRAME-01HB Lot. No. (See product label)

## SPECIFICATION

|                          |   |
|--------------------------|---|
| <b>Product Overview</b>  | Biotinylated recombinant Human PRAME Protein without tag was expressed in HEK293.   |
| <b>Species</b>           | Human   |
| <b>Source</b>            | HEK293  |
| <b>Protein Length</b>    | 100-509 aa  |
| <b>Conjugation/Label</b> | Biotin  |
| <b>Description</b>       | This gene encodes an antigen that is preferentially expressed in human melanomas and that is recognized by cytolytic T lymphocytes. It is not expressed in normal tissues, except testis. The encoded protein acts as a repressor of retinoic acid receptor, and likely confers a growth advantage to cancer cells via this function. Alternative splicing results in multiple transcript variants. |
| <b>Molecular Mass</b>    | 47 kDa  |
| <b>AA Sequence</b>       | VLDGLDVLLAQEVRPRRWKLQVLDLRKNSHQDFWTVWSGNRASLYSFPEPEAAQP<br>MTKKRKVDGLSTEAEQPFIPVEVLVDLFLKEGACDELFSYLIEKVKRKKNVLRLLCCKK<br>LKIFAMPMQDIKMILKMOVQLDSIEDLEVTCTWKLPTLAKFSPYLGQMINLRRLLLSHIH<br>ASSYISPEKEEQYIAQFTSQFLSLQCLQALYVDSLFFLRGRLDQLLRHVMNPLETLSIT<br>NCRLSEGDVMHLSQSPSVSQLSVLSLSGVMLTDVVSPEPLQALLERASATLQDLVFD<br>ECGITDDQLLALLPSLSHCSQLTTLSFYGNSSISALQSLQLHIGLSNLTHVLYPVPLE                    |

 Tel: 1-631-559-9269 1-516-512-3133

 Email: [info@creative-biomart.com](mailto:info@creative-biomart.com)  Fax: 1-631-938-8127

 45-1 Ramsey Road, Shirley, NY 11967, USA

|                       |   |
|-----------------------|---|
|                       | SYEDIHGTLHLERLAYLHARLRELLCELGRPSMVWLSANPCPHCGDRTFYDPEPILC<br>PCFMPN   |
| <b>Endotoxin</b>      | <1 EU/μg by LAL   |
| <b>Purity</b>         | > 90% by SDS-PAGE   |
| <b>Storage</b>        | Store it under sterile conditions at -20 to -80 centigrade. It is recommended that the protein be aliquoted for optimal storage. Avoid repeated freeze-thaw cycles. |
| <b>Storage Buffer</b> | Sterile PBS, pH7.4, 5% Glycerol, 0.1% SKL   |
| <b>Concentration</b>  | 0.19 mg/mL by BCA   |
| <b>Conjugation</b>    | Biotin  |

## GENE INFORMATION

|                        |  |
|------------------------|--|
| <b>Gene Name</b>       | PRAME preferentially expressed antigen in melanoma [ Homo sapiens (human) ]  |
| <b>Official Symbol</b> | PRAME  |
| <b>Synonyms</b>        | PRAME; preferentially expressed antigen in melanoma; MAPE; melanoma antigen preferentially expressed in tumors; cancer/testis antigen 130; CT130; OIP-4; opa-interacting protein 4; Opa-interacting protein OIP4; preferentially expressed antigen of melanoma; OIP4 |
| <b>Gene ID</b>         | 23532  |
| <b>mRNA Refseq</b>     | NM_006115  |

 Tel: 1-631-559-9269 1-516-512-3133

 Email: [info@creative-biomart.com](mailto:info@creative-biomart.com)  Fax: 1-631-938-8127

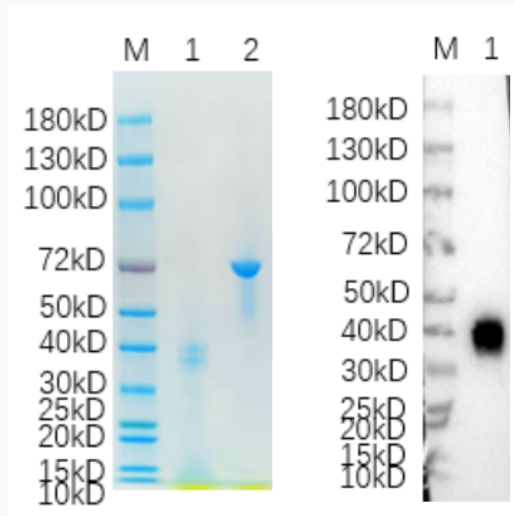
 45-1 Ramsey Road, Shirley, NY 11967, USA

**Protein Refseq** NP\_006106

**MIM** 606021

**UniProt ID** P78395

**SDS-PAGE and WB**



Reducing 4%-20% SDS-PAGE (CBB stained) and WB (Rabbit anti-Homo sapiens (Human) PRAME Polyclonal antibody) analysis profiles of purified PRAME. 1.

PRAME: 1  $\mu$ g 2. BSA: 1  $\mu$ g

 Tel: 1-631-559-9269 1-516-512-3133

 Email: [info@creative-biomart.com](mailto:info@creative-biomart.com)  Fax: 1-631-938-8127

 45-1 Ramsey Road, Shirley, NY 11967, USA