

Recombinant Human PRAME Protein (1-509 aa), His-tagged

Cat. No. PRAME-1492H Lot. No. (See product label)

SPECIFICATION

Product Overview	Recombinant Human PRAME Protein (1-509 aa) is produced by Yeast expression system. This protein is fused with a 6xHis tag at the N-terminal. Research Area: Apoptosis. Protein Description: Full Length.
Species	Human
Source	Yeast
ProteinLength	1-509 aa
Description	Functions as a transcriptional repressor, inhibiting the signaling of retinoic acid through the retinoic acid receptors RARA, RARB and RARG. Prevents retinoic acid-induced cell proliferation arrest, differentiation and apoptosis.
Form	Tris-based buffer, 50% glycerol
Molecular Mass	59.9 kDa
AA Sequence	MERRRLWGSIQSRYISMSVWTSPRRLVELAGQSLLKDEALAIAALELLPRELFPPLF MAAFDGRHSQTLKAMVQAWPFTCLPLGVLMKGQHLHLETFKAVLDGLDVLLAQEV RPRRWKLQVLDLRKNSHQDFWTVWVSGNRASLYSFPEPEAAQPMTKKRKVDGLST EAEQPFIPVEVLVDFLKEGACDELFSYLIEKVKRKKNVRLRCLCKKLIKIFAMPMQDIKM ILKMQQLDSIEDLEVTCTWKLPTLAKFSPYLGQMINLRLLLLSHIHASSYISPEKEEQYI AQFTSQFLSLQCLQALYVDSLFFLRGRDLQLLRHVMNPLETSLITNCRLSEGDVMHL SQSPSVSQLSVLSLSGVMLTDVSPEPLQALLERASATLQDLVFDECGITDDQLLALLP

 Tel: 1-631-559-9269 1-516-512-3133

 Email: info@creative-biomart.com  Fax: 1-631-938-8127

 45-1 Ramsey Road, Shirley, NY 11967, USA

SLSHCSQLTTLSFYGNISISALQSLLQHLIGLSNLTHVLYPVPLESYEDIHGTLHLERL
AYLHARLRELLCELGRPSMVWLSANPCPHCGDRTFYDPEPILCPCFMPN

Purity > 90% as determined by SDS-PAGE.

Notes Repeated freezing and thawing is not recommended. Store working aliquots at 4 centigrade for up to one week.

Storage The shelf life is related to many factors, storage state, buffer ingredients, storage temperature and the stability of the protein itself. Generally, the shelf life of liquid form is 6 months at -20 centigrade/-80 centigrade. The shelf life of lyophilized form is 12 months at -20 centigrade/-80 centigrade.

Concentration A hardcopy of COA with reconstitution instruction is sent along with the products.

GENE INFORMATION

Gene Name [PRAME preferentially expressed antigen in melanoma \[Homo sapiens \]](#)

Official Symbol [PRAME](#)

Synonyms PRAME; MAPE; CT130; OIP-4; OIP4;

Gene ID [23532](#)

mRNA Refseq [NM_006115](#)

Protein Refseq [NP_006106](#)

MIM [606021](#)

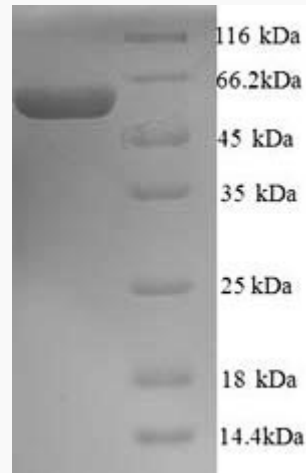
 Tel: 1-631-559-9269 1-516-512-3133

 Email: info@creative-biomart.com  Fax: 1-631-938-8127

 45-1 Ramsey Road, Shirley, NY 11967, USA

UniProt ID

P78395



(Tris-Glycine gel) Discontinuous SDS-PAGE (reduced) with 5% enrichment gel and 15% separation gel.

 Tel: 1-631-559-9269 1-516-512-3133

 Email: info@creative-biomart.com  Fax: 1-631-938-8127

 45-1 Ramsey Road, Shirley, NY 11967, USA