

Recombinant Full Length Human PRAME Protein, C-Flag-tagged

Cat. No. PRAME-252HFL Lot. No. (See product label)

SPECIFICATION

Product Overview	Recombinant Full Length Human PRAME Protein, fused to Flag-tag at C-terminus, was expressed in Mammalian cells.
Species	Human
Source	Mammalian Cells
Description	This gene encodes an antigen that is preferentially expressed in human melanomas and that is recognized by cytolytic T lymphocytes. It is not expressed in normal tissues, except testis. The encoded protein acts as a repressor of retinoic acid receptor, and likely confers a growth advantage to cancer cells via this function. Alternative splicing results in multiple transcript variants.
Form	25 mM Tris HCl, pH 7.3, 100 mM glycine, 10% glycerol.
Molecular Mass	57.7 kDa
AA Sequence	MERRRLRGSIQSRYISMSVWTSPRRRLVELAGQSLLKDEALAIAALELLPRELFPPLFM AAFDGRHSQTLK AMVQAWPFTCLPLGVLMKGQHLHLETFKAVLDGLDVLLAQEVR PRRWKLQVLDLRKNHQDFWTVWVSGNR ASLYSFPEPEAAQPMTKKRKVDGLSTE AEQPFIPVEVLVDLFLKEGACDELFSYLIEKVKRKKNVLRLLCC KKLKIFAMPMDIKMI LKMVQLDSIEDLEVTCTWKLPTLAKFSPYLGQMINLRLLLLSHIHASSYISPEK EEQYI AQFTSQFLSLQCLQALYVDSLFFLRGRLDQLLRHVMNPLETLSITNCRLSEGDMHL SQSPSVSQ LSVLSLSGVMLTDVSPPEPLQALLERASATLQDLVFDECGITDDQLLALL

 Tel: 1-631-559-9269 1-516-512-3133

 Email: info@creative-biomart.com  Fax: 1-631-938-8127

 45-1 Ramsey Road, Shirley, NY 11967, USA

PSLSHCSQLTTLSFYGNSISI SALQSLLQHLIGLSNLTHVLYPVPLESYEDIHGTLHLE
 RLAYLHARLRELLCELGRPSMVWLSANPCPHC
 GDRTFYDPEPILCPCFMPNTRTRPLEQKLISEEDLAANDILDYKDDDDKV

Purity > 80% as determined by SDS-PAGE and Coomassie blue staining.

Stability Stable for 12 months from the date of receipt of the product under proper storage and handling conditions. Avoid repeated freeze-thaw cycles.

Storage Store at -80 centigrade.

Concentration >50 ug/mL as determined by microplate BCA method.

Preparation Recombinant protein was captured through anti-DDK affinity column followed by conventional chromatography steps.

Full Length Full L.

GENE INFORMATION

Gene Name [PRAME PRAME nuclear receptor transcriptional regulator \[Homo sapiens \(human\) \]](#)

Official Symbol [PRAME](#)

Synonyms MAPE; OIP4; CT130; OIP-4


Gene ID [23532](#)

mRNA Refseq [NM_206955.3](#)

Protein Refseq [NP_996838.1](#)

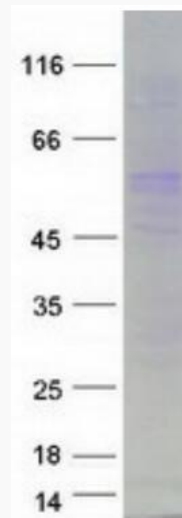
 Tel: 1-631-559-9269 1-516-512-3133

 Email: info@creative-biomart.com  Fax: 1-631-938-8127

 45-1 Ramsey Road, Shirley, NY 11967, USA

MIM 606021

UniProt ID P78395



Coomassie blue staining of purified PRAME protein.

 Tel: 1-631-559-9269 1-516-512-3133

 Email: info@creative-biomart.com  Fax: 1-631-938-8127

 45-1 Ramsey Road, Shirley, NY 11967, USA